

# COLLAGE

August 2012



COLORADO WATERCOLOR SOCIETY



## Message from the President



Marcio Correa, CWS President

In my very first CWS meeting, President Randy Hale asked me what had been my motivation for joining. "For Inspiration," I replied. To me, it is

inspiring to be part of a group that includes such outstanding artists as Thomas Owen and Frank Francese (to name just two); to observe the passion and experience of so many accomplished professionals; and to witness the enthusiasm and wonder of the many amateurs and beginners in the society. In all these years, I have not been disappointed, and would still reply the same way today, as I take on the role of new President.

This position is a great honor and a big responsibility, as I follow excellent recent past presidents. Sydney Eitel has continued to shape the CWS with her wealth of knowledge and positive energy; Chuck Danford only had one year at the presidency, but made great contributions to the organization of the society. They have left a good foundation, and a very competent, experienced Executive Board, so I am confident we will continue their good work.

This is also a chance to give something back to the CWS and the membership for all the opportunities I was given. Despite living outside of the metro area, I have attended most meetings, networked with other professionals, met famous artists and made new friends. I have also participated in tours, exhibited my work, done demos, joined paint outs and receptions, published articles,

attended workshops, and borrowed a lot of books and DVDs from our library.

It is my wish to encourage more members to enjoy these opportunities, and to facilitate access to those in other areas of the State. I hope more members will contribute their work to the organization--we are simplifying our systems to make administration easier. And nothing would please me more than to continue to see the consistent improvement in the quality of the artwork produced by our members in recent years--I am sure more of our work could and should be exhibited in regional and national shows.

Being an artist is a very individual, often lonely adventure; having a group of talented



fellow artists to share experiences with and learn from is a beautiful gift. It is your attendance and participation that makes the CWS such an inspiring place. I look forward to meeting more of you in person soon, and hearing your suggestions on how to continue to make the CWS a great asset to you and to Colorado artists. Keep on painting!

## TABLE OF CONTENTS

### PAGE 2:

Workshops

### PAGE 3:

The Board in Brief  
Artist Classes  
Members Kudos

### PAGE 4

Meetings, Shows and Events

### PAGE 5:

CWS Recognition June 2012

### PAGE 6

Official Ballot, CWS  
Policies/Procedures Merger  
and Update

### PAGE 7-9

WFWS prospectus

### PAGE 10-11

CWS Member Prospectus

## MISSION STATEMENT

The Colorado Watercolor Society is an organization dedicated to uphold the highest standards and principles of art and to promote, encourage, educate and foster an interest in fine art in all media, especially watercolor.

The Colorado Watercolor Society meets at the First Plymouth Congregational Church, 3501 South Colorado Blvd. in Englewood, (southwest corner of Hampden Avenue and Colorado Blvd.) in the Plymouth Hall.

The Collage newsletter is published monthly (except July and December) to all CWS members.

## TO SEND ARTICLES AND IDEAS OR TO SUBMIT ADS CONTACT:

Brian Serff, Editor  
editor@coloradowatercolorsociety.org  
720-535-5417

# Workshops

## Joan Fullerton and Lionel Sanchez

### **Joan Fullerton.**

#### **Workshop teacher and juror.**

This is the perfect workshop to attend in conjunction with the New Trends Exhibit. Come learn from the artist/juror and have fun creating outside the box. Space is limited so sign up today with Terrey Harrod at: [teamterrey@yahoo.com](mailto:teamterrey@yahoo.com) or 303-981-6004 or CWS: [www.ColoradoWatercolorSociety.org](http://www.ColoradoWatercolorSociety.org)

On Day 1, she will demonstrate a variety of techniques and materials. You will make a sampler on a full sheet of w/c paper. These compositions can be collaged into larger works or kept as a resource. On day 2, you will create a series of 3 paintings on paper or canvas. As the workshop continues, you will continue putting together multi-media paintings with an emphasis on ways to generate "content" in your work. Of course on the 3rd day there will also be an opportunity to share and to see what all has transpired.

More paintings at [www.joanfullerton.com](http://www.joanfullerton.com)

**Workshop Dates: September 11, 12 and 13, 2012.**

**Cost is \$175 for CWS members, \$210 for non-members.**



### **Lionel Sanchez.**

#### **Florida Workshop Teacher**

A Signature Member of CWS, Lionel moved to Florida and guess what: He became the Miami Watercolor Society President! While living in Denver, Lionel was invited by the art department of Red Rocks Community College to teach a course on watercolor, which he successfully did with rave reviews. He is coming all the way from Florida to teach a workshop for CWS. Most of his workshops are offered along the Florida coast. I encourage you to take this opportunity to learn from this artist. Lionel is a kind teacher with great humor who offers good instruction on accomplishing his award winning paintings. Come and enjoy this 3 days of learning and painting. We can't wait to see you. Sign up today with Terrey Harrod at [teamterrey@yahoo.com](mailto:teamterrey@yahoo.com) or 303-981-6004 or [www.ColoradoWatercolorSociety.org](http://www.ColoradoWatercolorSociety.org)

More paintings at [www.LionelSanchezWatercolors.com](http://www.LionelSanchezWatercolors.com)

**Workshop Dates: October 9, 10 & 11, 2012.**

**Cost is \$300 for CWS members, \$350 for non-members.**





## The Board in Brief

Kate Wyman for Bonnie Jones  
Corresponding Secretary



Chuck Danford, President, called the meeting to order.

Minutes from the May meeting were read and approved.

The New Trends Show will be held at the Madden Museum in Greenwood Village. The opening reception will be catered and feature a band. There will also be a slide show of the artwork in the atrium.

The September meeting will have an ice cream social in addition to the regular meeting. There should be an interesting discussion on the process of entering shows.

The next workshops will be Joan Fullerton Sept 11-13 at the Madden Museum and Lionel Sanchez, October 2012.

The Member Show will be held at the Co-Art Gallery on Santa Fe Dr from Oct 14-28. Anyone interested in helping with this show, contact Linda Olmstead.

The new Bi-laws were voted on via mail, e-mail and during the meeting. They were approved.

Member dues should have been sent to Debra Patterson, Membership official, by June 30, 2012 to be eligible to participate in upcoming shows. New Rosters will be available in the Fall.

Recognition for outstanding contributions to CWS were awarded at the June meeting to Pat Dahl, Sidney Eitel and Joanie Bauer Hupp.

Remember to complete the CWS outreach form when you volunteer your art expertise in the community, at schools and senior centers. This form can be obtained from Mary Jo Ramsdale.

Members who wish to have get well or sympathy cards sent to members, contact Diane Fechenbach.

## Artist Classes & Calls

### Calls, Opps & Classes

#### **Mountainside Miniatures**

August 27-October 20, 2012

[www.mtinsideartguild.org](http://www.mtinsideartguild.org)

#### **27th Annual Wyoming Watercolor National Exhibition**

August 6-Sept. 15, 2012

[www.wyomingwatercolorcociety.com:80](http://www.wyomingwatercolorcociety.com:80)

#### **Colorado Coalition of Artists**

September 7-30, 2012

Contact 970-221-3019

#### **18th Annual Gateway to the Rockies Art Exhibit**

November 16-Dec 15, 2012

For a prospectus go to: [Auroraartistsguild.com](http://Auroraartistsguild.com) or [auroragov.org/arts](http://auroragov.org/arts)

Or call: 303-739-6520 for a mailed copy

**Chuck Danford** will begin a new session of watercolor classes

September 5 - October 10, 2012.

At Ken Caryl Ranch Recreation Center

Wednesdays 9:00 AM - 12:00 noon

See Chuck's work at [www.charlesdanford.com](http://www.charlesdanford.com)

For information call 303.979.4070.

Register at [www.ken-carylranh.org](http://www.ken-carylranh.org)

## Member Kudos

**Carla Stoltzfus** had a painting accepted in the Rocky Mountain National Watermedia Exhibition.

**Rita Derjue** is exhibiting a solo exhibit at the Town Hall Arts Center in downtown Littleton in conjunction with Historic Littleton, Inc. from August 1 through August 17.

Also she is part of three group shows this summer: Central City Arts Association; the All Colorado Show at Curtis Arts Center in Greenwood Village, July-August 31 and at the Colorado Gallery of the Arts at Arapahoe Community College, Littleton, July-August 3, 2012.

# Dates for CWS Meetings, Shows & Events

## CWS Regular Monthly Meetings

- North Critique Group: (Chairperson - Lillian Montoya) at Standley Lake Library in Arvada. Call Lillian for next date and time.
- CWS Board Meeting: Tuesday, August 1st, 4:30pm
- CWS General Meeting: Tuesday, September 18th, 7:00pm
- South Critique Group (Chairperson - Diana Carmody): at Koebel Library in Littleton
- The next Collage will be September, submissions to Brian Serff by Tuesday August 28th, to be in the September Collage

## National Watercolor Society

NWS National Watercolor Society 92nd Annual Exhibition

NWS Gallery, 915 S. Pacific Ave., San Pedro, CA 90731

**Opening & Reception:** 9/29/12

**Deadline:** Has Past. \$25,000+ in Awards

**Jury of Selection:** Elaine Daily-Birnbaum, chair; Fran Larsen, Warren Taylor

**Juror of Awards:** Barbara Nechis

Prospectus at [www.nationalwatercolorociety.org](http://www.nationalwatercolorociety.org)  
or SASE to

Penny Hill, 1145 Barham Drive #130, San Marcos, CA 92078

**Annual Demos:** Barbara Nechis, 8/12/12; Thomas Schaller, 9/30/12

## Upcoming General Meeting Programs

The next CWS Meeting will be September 18, 2012  
Ice Cream Social.....Gene Youngmann will present the program.  
How To Prepare Your Artwork For A Show/Exhibit!

## Upcoming CWS Workshops

**Joan Fullerton** September 11, 12 & 13th 9am to 4pm Location  
The Madden. She is the Juror for the New Trends show, and the  
workshop will be held at the museum.

*Cost is \$175 for CWS members, \$210 for non-members.*

**Lionel Sanchez** October 9, 10 & 11th 9am to 4pm Location  
to be determined.

*Cost is \$300 for CWS members, \$350 for non-members.*

## Announcement : Sara Michaels

Sara died 7-25-2012. She was 90 years old. She was a long standing member of CWS. She painted full sheet watercolors of complicated subjects such as glass, or quilts etc. They were very beautiful. She is survived by Eugene, her husband, four children, and two grandchildren. Their address is 14050 Foothill Rd. Golden, CO 80401.

## New Trends September 7-27, 2012

The New Trends in Water Media Show pushes members to make radical forays in their approaches to water media painting in subject matter, style and composition. New Trends encourages CWS artists to push the envelope and stretch into what might be uncomfortable areas while tackling crucial design elements.

**Co-Chairs** Sue Holton & Vicki Tucker

Madden Museum of Art/Palazzo Verdi  
6363 South Fiddler's Green Circle  
Greenwood Village, CO 80111

**Juror.** Joan Fullerton

Show dates September 7 – 27, 2012

Opening Reception Friday, September 7, 2012

## CWS Member Show-October 15-28, 2012

Co-Art Gallery in the heart of Denver's Art District at 846 Santa Fe Drive

Reception - Collectors' Friday, October 19, 2012

Deadline for entry Friday September 7, 2012.

## Front Range Art Group, notification

Exhibit dates:

August 31 - September 3, 2012 at

Chautauqua Community House, Boulder CO

The Boulder Art Association (BAA) and the Colorado Chautauqua Association present COLORado, the 5th annual juried exhibition at the historic Chautauqua Community House. The exhibit has the general theme of "COLORado". To misquote Shakespeare, "Much ado about COLOR". Work submitted must relate to the show theme. The theme may be taken literally or conceptually - historical, interpretive, etc.

If you need more information please contact the show director,  
Diane Wood, at [diane@woodcolorado.com](mailto:diane@woodcolorado.com).

## NEXT GENERAL MEETING: September 18th

**View, download and print the Collage online!**

Every issue of the Collage will be mailed only to those members without an e-mail address on file. All other members will continue to receive an e-mail notice when the Collage is published and enjoy it in full color on our website!

# CWS Recognition June 2012



**Once every year the Colorado Watercolor Society is pleased to recognize members who have given outstanding service to the organization. Beginning in March, a committee of CWS members considers nominees and then makes a recommendation to the Board of Directors of artists to be recognized. I am pleased to introduce three such artists who the Board of Directors wishes to recognize in 2012. The artists being honored tonight have gone above and beyond through the years in helping CWS serve its membership, meet its goals and, in some cases, help it move forward.**

## Pat Dall

The first artist to be recognized has worn many hats for CWS. She joined in 2002 and within a year was our official slide chair for entries into our shows. For six years she was always at the ready to assist lost and confused artists in getting their slides right side up and facing forward. On several occasions she served on the Nomination Committee – that sometimes scary job of identifying and cajoling members to contribute to the society by becoming committee participants or officers. In the last ten years she has served two years as a member of the Recognition Committee, and also two years on the Board of Directors as the Program Chair. She said she had “more fun than a person ought to have”. In addition to always being available to sit shows and handle odd jobs for the organization, she is a signature member of CWS and known for her delightful pattern paintings and ink resists. Please join me in congratulating Pat as we recognize her many years of service to CWS.

## Joanie Bauer Hupp

Our next artist joined CWS in 2006 in time to be selected for the New Trends Exhibit. And, even as a brand new member she began her contributions by agreeing to sit the show. She has been the “Graphics Queen” for CWS since about 2008 – meaning that she had a hand in designing many of the things

you see. These range from participating on the Web Design committee as we launched our web site, to redesigning the logo and the CWS letterhead that were adopted in 2009, plus designing several postcards for New Trends and State Show exhibits, and designing the Roster covers since 2009. She says that the new Roster cover helps build the CWS brand image and she wanted to showcase the versatility of our artists. Each of these projects involved countless hours of design and draft and redesign with dialog with the CWS Board Members. Joanie Bauer Hupp became a signature member in 2008. She lives in Durango – demonstrating that members can make significant contributions regardless of where they live. Please join me in honoring Joanie and saying thank you for her service.

## Sydney Eitel

Our final recognition this evening goes to an artist who has been a Signature Member of CWS since 2008, but she joined in 2003. Shortly after joining, she decided to get involved with volunteering so she could meet other members. She agreed to be the Recording Secretary for the Board. While serving in this position, she also co-chaired the State Exhibition. Besides the many hats the chair must wear and the numerous tasks this entails, she also reconstructed the history of the show and rebuilt the missing show notebook. She has received show entries and shipped paintings for several CWS exhibits. Then, when CWS moved from slide entries to digital entries, she held a one day workshop to help members make the transition.

When approached to serve as President Elect, she generously agreed to do so. She was President of CWS in 2010 and 2011 and is now finishing her year as Immediate Past President. This is her 6th year on the Board of CWS. Sydney Eitel served as our Alternate Delegate and also as our Delegate to WFWS. She now sits on the WFWS committee. And, finally, she is currently receiving entries for the New Trends Exhibit. We are happy to recognize Sydney Eitel for her many years of service to CWS.



# CWS Members Recognized

**The following members have been recognized for their outstanding contributions and service to CWS from 1996 to 2012.**



*Past President Sydney Eitel received Special Recognition at the June meeting.*

## 1996

Laverne Schoendaller  
Betty Patten  
Ora King

## 1997

Eleanor Benson  
Ruth Sherbok  
Irene Tanberg

## 1998

Evelyn Lombardi Lail  
Barbara Nielsen  
Olive and Walt Green

## 1999

Ed Brookins  
Dorothy Foster  
Doris Peacock

## 2000

Ruth Cocklin  
David Gardner

## 2001

Arlene Bruns  
Alice Stambaugh  
Ruth Nystrom

## 2002

Carol Reeves  
Vi Gallagher  
Julie Jones

## 2003

Wilma Stapleton  
Sara Michael  
Rita derjue  
Jean Cole

## 2004

Jackie McFarland  
Barbara Garrity  
Suzanne Bartlett

## 2005

Ann White  
Mildred Kelly  
Pamela Gilmore Hake  
Mary Anne Clark \*\*

## 2006

Helen Brainerd  
Nancy (Nan) Lund  
Carla Rouse

## 2007

*recognition moved  
from October to June*

## 2008

Patricia Rucker  
Andrew Dubois

Riya Nakazona  
Carolyn Tegeder  
Celine Kruger \*\*  
Joy Foster \*  
Betty McElveny \*  
Barbara Nielson \*

## 2009

David Wicks  
Tanis Bula  
Mildred Kelly \*  
Carol Reeves \*  
Marian LaFleur \*

## 2010

Evelyn Lombardi Lail \*  
Diana Carmody  
Randy Hale  
Gene Youngmann

## 2011

Elaine Appel  
David Castle  
Janice Hanson

## 2012

Pat Dall  
Sydney Eitel  
Joanie Bauer Hupp

*\* Lifetime/Emeritus  
Membership*

*\*\* Posthumous*

# Official Ballot, CWS Policies/Procedures Merger and Update

By David Wicks, CWS Parliamentarian

This is your Ballot for the proposed merger and update of the CWS Policies and Procedures into a single document, as described in previous editions of the Collage. The goal of this merger and update is to produce a single document which is easier to read, while updating out-of-date provisions.

The complete language of the proposed merger and update can be found on the CWS website ([www.coloradowatercolorssociety.org](http://www.coloradowatercolorssociety.org)) under "Resources" > "Downloadable Documents" > "Policies/Procedures Merger and Update, Draft 9").

The vote will be taken at the CWS General Meeting on September 18, 2012. Due to quorum requirements, it is important for every member to vote, either in person at the meeting or by ballot.

2. **If you will NOT be attending the September 18th meeting**, here are three options for voting (by no later than September 10th):

a. **Complete this ballot and mail it to:**

Colorado Watercolor Society

c/o Bonnie Jones

19054 E. Costilla Pl, Centennial, CO 80016

b. **Complete this ballot, scan it, and send it by e-mail to:**  
[bonnie@jrjones.net](mailto:bonnie@jrjones.net)

c. **E-mail a message to [bonnie@jrjones.net](mailto:bonnie@jrjones.net) stating whether you are either in favor or not in favor of the proposed merger and update (remember to include your name).**

## How to vote:

1. **If you will be attending the September 18th meeting**, you may vote by a show of hand at the meeting; you do not need to complete a ballot.

**Thank you for voting!**

## Ballot

☐

**YES:** I am *in* favor of the proposed merger and update of the CWS Polices/Procedures

☐

**NO:** I am *not in* favor of the proposed merger and update of the CWS Polices/Procedures

\_\_\_\_\_  
Sign your name

\_\_\_\_\_  
Print your Name

\_\_\_\_\_  
Date



## Your Ad Could Appear Here!

All ads are black and white.  
Artwork must be camera ready in a PDF or JPG format.  
Photos must be 300 dpi.

| Ad Size             | Dimensions (WxH) | Non-Member Cost | CWS Member Cost |
|---------------------|------------------|-----------------|-----------------|
| 1/2 page horizontal | 7-1/2" x 4-7/8"  | \$75            | \$67.50         |
| 1/4 page vertical   | 3-5/8" x 4-7/8"  | \$60            | \$54            |
| 1/8 page            | 3-5/8" x 2-3/8"  | \$25            | \$22.50         |

*Past President Sydney Eitel swearing in the new CWS Board of Directors at the June meeting.*





CALL FOR ENTRIES

## 2012 CWS MEMBER EXHIBIT

CO-ART GALLERY  
846 SANTA FE DRIVE  
DENVER CO 80204

**OCTOBER 15 – 28, 2012**

### Schedule

- **Friday, September 7**.....Deadline for receiving entry forms, digital images and fees
- **Monday, September 24**.....Notifications mailed
- **Sunday, October 14**.....Hand delivery of paintings
- **Friday, October 19**.....Reception (5-9 p.m.)
- **Sunday, October 28**.....Artists pickup artwork (4:00-6:00PM)

**Juror: Molly Davis** ~ For as long as Molly Davis can remember, having a brush in her hand gave her the greatest pleasure she's ever known. She paints for the sheer joy of expressing the many subtle changes she sees in the light at sunrise and sunset, and the multitude of colors she finds in nature that constantly provoke her to interpret them in paint.

Molly is a realist watercolor painter who has national and regional awards for her art. She splits her time between plein aire painting and work in the studio. Molly believes that drawing and the fundamentals of painting must be learned before one can become a complete artist. She states that "...mastering those skills takes a lifetime of work and study."

### 2012 MEMBER Exhibit

Mail completed entry form with digital entries on CD, entry fee, image printout, and only if you want mail notification, a SASE \$.65 (otherwise all communication will be done by email) to: **SYDNEY EITEL, 1019 LAMAR ST, LAKEWOOD, CO 80214**

Artist \_\_\_\_\_ Telephone \_\_\_\_\_  
Last First Daytime  
 Address \_\_\_\_\_  
Street Address Evening  
City State Zip Code Email

| Title | Medium | Frame Size<br>(H x W) | Price | A | R |
|-------|--------|-----------------------|-------|---|---|
| 1.    |        |                       |       |   |   |
| 2.    |        |                       |       |   |   |
| 3.    |        |                       |       |   |   |

I hereby agree to the liability clause (on other side of this sheet) and to abide by all the rules and regulations set forth in this prospectus.

\_\_\_\_\_  
*Artist's Signature*

### Notification Card – Must Accompany Entry; Do Not Detach

NAME \_\_\_\_\_

| Title | Price | Accepted | Not Accepted |
|-------|-------|----------|--------------|
| 1.    |       |          |              |
| 2.    |       |          |              |
| 3.    |       |          |              |

## ***Eligibility***

This exhibit is open to all CWS members whose dues are current.

## ***Method of Entry – Digital Images Only!***

One to three images may be entered. Digital files should be submitted on a CD enclosed with your entry form (*CD's will not be returned*). Images must be jpeg format, 1200 pixels in the longest dimension, and 300 dpi. Name your files:

**LastName/FirstName/Title/date/size/medium.**

**i.e.,Smith/Mary/YellowDaisy/2012/11x14/mixed media.**

Write your name, phone, e-mail address, and image title(s) on the CD. Along with the CD, enclose a printout of each digital image (maximum size 8.5" X 11"). The printout is for office reference only.

## ***Entry Fees (non-refundable)***

Entry fee for one image: \$15 total

Entry fee for two images: \$20 total

Entry fee for three images: \$25 total

Make checks payable to Colorado Watercolor Society. ***Be sure to mail the entry form, print out and payment along with your CD and SASE for mail notification.***

## ***Entry Requirements***

Entries must be predominantly watermedia. Hand painted collage papers and other materials may be incorporated. Grounds can be on yupo, canvas, or any watercolor paper, but all must be suitably framed in silver, gold or black.

Source or reference material, including photographs, must be the artists own.

## ***Presentation***

Artwork must meet gallery quality standards. It must be ready to hang with wire on the back. No exposed glass edges and no saw tooth hangers. Mats must be white or off-white (list of suggested white mat colors at [www.coloradowatercolorsociety.org](http://www.coloradowatercolorsociety.org)). Colored liners or fillets may not be larger than ¼ inch. No cracked or chipped glass. Paintings longer than length plus width = 40" (half-sheet WC paper) must be framed using plexiglass. Work must be completed within the last two years and not previously shown in a juried CWS or WFWS Exhibit.

## ***Awards***

Juror will chose awards from selected artwork, and attendees at the reception will vote for People's Choice Award.

## ***Liability***

Utmost care will be taken in handling paintings. Artists are responsible for maintaining their own insurance for their artwork.

## ***Commission***

The commissions for this show will be 30%. Sales will be handled on-site by Co-Art Gallery.

**PAINTINGS MUST BE FOR SALE.**

## ***Additional Information***

- Accepted entries must be properly framed and ready to hang, with an ID label and price securely attached to the front *and* back. CWS and Co-Art Gallery reserve the right to refuse any work not satisfactorily framed or not meeting its standards.
- Detailed delivery instructions will be sent with notification. Information recorded on the entry form is considered final and may not be changed.
- Any requirements of the exhibit not fulfilled will result in disqualification.
- Works juried into this show and not delivered for exhibit will prohibit the artist's entry into this exhibit for two years.
- Hanging will be done by CWS and Co-Art volunteers.
- No exhibited work will be released until the close of the exhibit.
- To join CWS and enter this exhibit, please complete the membership form and send, along with your dues check, with your entry form. Membership forms are located on the CWS website at [www.coloradowatercolorsociety.org](http://www.coloradowatercolorsociety.org).

## ***Entry Checklist***

- ☐ Entry Form/Notification Card (do not separate)
- ☐ 4-1/8" by 9-1/2" SASE (\$.65 postage) only if you need mail notification
- ☐ 1, 2, or 3 digital images on labeled CD
- ☐ Entry fee (payable to *Colorado Watercolor Society*)
- ☐ Printed image of your work

**Mail completed entry forms to:  
SYDNEY EITEL, 1019 LAMAR ST,  
LAKEWOOD, CO 80214**

If you have questions, contact Co chair Jan Stewart  
303-985-0180; [janson2stewart@aol.com](mailto:janson2stewart@aol.com) or  
Linda Olmstead 303-771-4564; [lso1@mindspring.com](mailto:lso1@mindspring.com)

**Deadline for receipt of entries is**

**FRIDAY,  
SEPTEMBER 7, 2012**



# Southwestern Watercolor Society Hosts the 38<sup>th</sup> Annual Western Federation of Watercolor Societies Exhibition

---

Western Federation website: <http://www.wfws.org/>

## WESTERN FEDERATION OF WATERCOLOR SOCIETIES

The Western Federation of Watercolor Societies (WFWS) was formed 38 years ago through the foresight and work of Dr. David Gale (1915 - 1980) of the New Mexico Watercolor Society. Today, the WFWS includes over 4,500 artists in twelve regional watercolor societies and guilds. The WFWS encourages and recognizes artistic excellence and works to increase visibility of watercolor as an artistic medium through our annual exhibitions.

Arizona Watercolor Association (Phoenix, AZ)AWA  
Colorado Watercolor Society (Denver, CO)...CWS  
Idaho Watercolor Society ..... IWS  
Nevada Watercolor Society (Las Vegas, NV)NVWS  
New Mexico Watercolor Society ..... NMWS  
San Diego Watercolor Society (San Diego, CA)SDWS  
Southern Arizona Watercolor Guild (Tucson, AZ)SAWG  
Southwestern Watercolor Society (Dallas/Ft Worth, TX)  
Texas Watercolor Society (San Antonio, TX) TWS  
Utah Watercolor Society (Salt Lake City, UT) UWS  
Watercolor Society of Oregon..... WSO  
West Texas Watercolor Society (Lubbock, TX)WTWS

### Juror---Mark Mehaffey

Signature Member of AWS, NWS, Rocky Mountain Water Media Society, Watercolor West, and Transparent Watercolor Society of America, among others will judge this year's Exhibition. Mark's work has appeared in The Best of Watercolor, Places in Watercolor, Splash-5 and Splash-10. His paintings are included in numerous private, corporate, and public collections. His first book "Creative Watercolor Workshop" was released in summer 2005. Mark is listed in "Who's Who in America" 2001. Check his web site [www.mehaffeygallery.com](http://www.mehaffeygallery.com) for examples of his work.

## 38<sup>th</sup> Annual WFWS Exhibition *Entry Requirements*

1. The artist must be a member of one of the societies in the Western Federation of Watercolor Societies (WFWS) and may enter through one society only.
2. Work must be original and completed within the last two years. All work must be water-based media on paper or yupo presented in a primarily aqueous manner. Water-based media includes watercolors, acrylics, inks, gouache, casein, egg tempera, watercolor pencils and watercolor crayons. Collage materials must be painted by the artist with water media. Non water-based media may be integrated into a primarily aqueous painting as a minor element (20% or less of the surface). No copies of another artist's work or recognizable use of another's copyrighted intellectual property will be accepted. Paintings must not have been shown in any WFWS, juried national or international exhibitions (including Nat'l or Int'l on-line Exhibitions).
3. Size Limitations:  
Maximum outside mat size: 32" x 40"  
**(must be in whole inches – no fractions !)**  
**Minimum mat width : 3.5" each side** Minimum image size 140 square inches
4. Entries will be submitted digitally as an email attachment to your society delegate *or on a CD. CDs will not be returned.* (See Digital Image Requirements)
5. Accepted works must be matted with a single white or off-white mat (no gray or beige). Attach work to a 3/16<sup>th</sup> inch foam-core backing in **a clear plastic sleeve with your label on back of the sleeve. Do not seal the sleeve. Use blue painters tape only for re-sealing of the sleeve when returned.**

6. No price changes will be accepted. Paintings must be available for the duration of the show. **Irving Art Center requires a 20% contribution on any sales from the Show.**

7. Submission will be rejected if it does not conform to information provided with entry. The juror's decision is final. Permission is assumed by SWS to reproduce accepted artwork for the catalog and promotional uses. Failure to provide accepted artwork will result in the artist being ineligible to enter WFWS for the following two exhibitions.

**FEES – Make check payable to your society “COLORADO WATERCOLOR SOCIETY”**  
One entry is \$30, \$5 additional each for up to 2 more entries. Only one painting per artist will be accepted. Entry fees are non-refundable. Each entrant will receive a full color catalog. Additional catalogs may be purchased from SWS for \$15.

**IF ACCEPTED** - Accepted paintings must be shipped by your society delegate to SWS with a pre-paid return using an “**Air Float Container.**” A handling fee of \$40 for each accepted painting, made payable to SWS, will be required. Detailed instructions for labeling and shipping will be included with notification of acceptance.

### Digital Image Requirements

1. File format: **.jpg files** (no exceptions)
2. Resolution **must be 300 dpi**
3. Image size must be set so the **longest dimension is 1200 pixels.**
4. Each image file must be named as follows: Your Society initials, first four letters of your last name, painting number (1, 2, 3), painting title (short versions please), .jpg extension.  
Example: SWS, Joe Painter, 1<sup>st</sup> entry, “Darn Good Picture” would be: **SWSPain1Darn.jpg**
5. Attach the image(s) to an email and send them to your **Society Delegate.** ( *or mail the image(s) on a CD to your Society Delegate*)

**Important—** Entry Form, digital files, and questions) should be sent to **your Society Delegate**, not to SWS

#### Key Dates

**Dec 7, 2012**      Entries due to your  
**Society Delegate**  
**Feb 22, 2013**      Accepted notices  
mailed to Delegate  
**Mar 15, 2013**      Matted paintings  
due to Delegate  
**June 1, 2013**      Exhibition opens to Public

**Your Society: Colorado Watercolor Society**

**Your Delegate: Gene Youngmann**  
**8465 West 91<sup>st</sup> Avenue**  
**Westminster CO 80021-4618**  
**H303-421-9886 C303-587-7503**  
**Delegate's Email: gyoungmann@comcast.net**

38<sup>th</sup> Annual WFWS Exhibition June 1st – July 7th, 2013

#### Keep This Section for Your Records

| Complete Title (please print) |  | Price | Image Size H x W | Mat Size |
|-------------------------------|--|-------|------------------|----------|
| H x W                         |  |       |                  |          |
| Entry #1                      |  |       |                  |          |
| Entry #2                      |  |       |                  |          |
| Entry #3                      |  |       |                  |          |

**Check List (Contact Your Society Delegate, Gene Youngmann H303-421-9886 or C303-587-7503 with any questions)**

\_\_\_\_\_ Painting has not been in prior WFWS, juried National or International Exhibitions (including juried Nat'l or Int'l on-line Exhibitions )

\_\_\_\_\_ JPG file emailed to your society delegate **or on CD (CDs will not be returned)**

\_\_\_\_\_ Check enclosed for entry fee, made out to your society

\_\_\_\_\_ Entry form, signed and completed

\_\_\_\_\_ Email address.... or include a self-addressed, stamped #10 envelope only if you DO NOT want notification by email

**38TH ANNUAL WESTERN FEDERATION OF WATERCOLOR SOCIETIES EXHIBITION**

Neither the **Southwestern Watercolor Society** nor its officers, nor any receiving or leasing agent will be liable for loss or damage to any work of art submitted to this exhibition. Insurance, if desired for shipping, exhibition or any other reason, is the responsibility of the individual artist. Images of selected work may be used for publicity, catalog or slide shows at the discretion of the **SWS**. By submitting work to this exhibit the artist agrees to the conditions set forth on this entry form. I hereby agree to the above liability clause and to abide by all the rules and regulations set forth in the prospectus of the Western Federation of Watercolor Societies 38th Annual Exhibition. Permission is granted to photograph my painting and use my image for publicity purposes.

**Artist signature** \_\_\_\_\_ **Date** \_\_\_\_\_

**PLEASE PRINT CLEARLY !**

Name \_\_\_\_\_

Address \_\_\_\_\_

City \_\_\_\_\_ State \_\_\_\_\_ Zip code \_\_\_\_\_

Phone \_\_\_\_\_ Email \_\_\_\_\_

**JPG File provided as:**

\_\_\_\_\_ Email attachment

\_\_\_\_\_ CD (enclosed)

Entry Fee: 1 entry \_\_\_\_\_ \$30

2 entries \_\_\_\_\_ \$35

3 entries \_\_\_\_\_ \$40

Check number \_\_\_\_\_

| Medium   | Price     | Image H x W | Outer Edge of Mat H x W |
|----------|-----------|-------------|-------------------------|
| Entry #1 | Title     |             |                         |
|          | File Name |             |                         |
| Entry #2 | Title     |             |                         |
|          | File Name |             |                         |
| Entry #3 | Title     |             |                         |
|          | File Name |             |                         |

**Fill in this section and provide a self-addressed stamped #10 envelope only if you **DO NOT** wish to be notified by email**

**Artist's name:**

Entry 1  
Title \_\_\_\_\_

Accepted Not Accepted

Entry 2  
Title \_\_\_\_\_

Accepted Not Accepted

Entry 3  
Title \_\_\_\_\_

Accepted Not Accepted



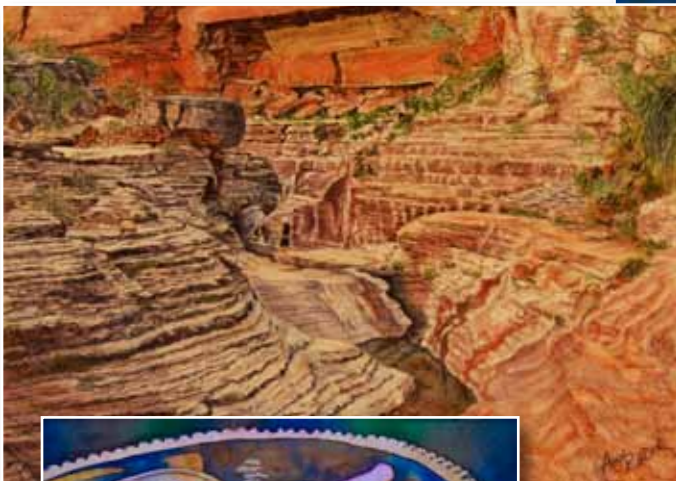


P.O. Box 100003  
Denver, CO 80250-0003

## COLLAGE

Submission deadline  
for September Issue is:  
***Tuesday August 28th***

*Ann Roche*



*Marcy Trahan*



*Kathy Cranmer*



[www.ColoradoWatercolorSociety.org](http://www.ColoradoWatercolorSociety.org)