

## COLLAGE

June 2010



## JEAN COLE... PAINTING GLASS

At our June meeting, we are in for a real treat. Colorado Watercolor Society Signature Member, Jean Cole will give a demonstration on the painting of glass. Not painting ON glass but the watercolor painting of glass with all of its complexity, intricacies, shadows, and reflections. To see why I say we are in for a real treat, you have to go to her web-site

[www.jeancolewatercolors.com](http://www.jeancolewatercolors.com) and look at her glass gallery. Actually look at all of her galleries, but especially the glass. Look at the work carefully, study it, and look at it again. Her work is quite simply amazing.

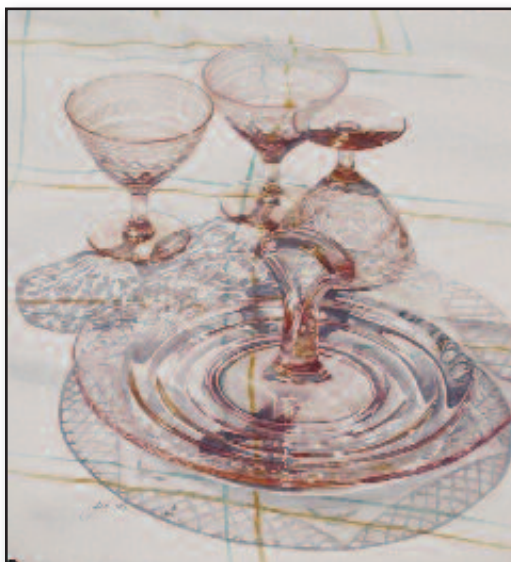
Jean graduated Phi Beta Kappa from the University of California at Berkeley with a degree in design and pursued a career in interior design. In the early 1980's she returned to her great love, watercolor painting. Today she is a Signature Member in The American Watercolor Society, National Watercolor Society, Rocky Mountain National Watermedia Society, the Transparent Watercolor Society, and the Colorado Watercolor Society.

Jean has been published frequently and her work is widely collected. She has won numerous awards including:

Presidents Award, 1998 and 1999 Colorado Watercolor Society State Watermedia Exhibition

Best of Show Award, 1998 Rocky Mountain National Watermedia Exhibition

Award of Excellence, 1997 Colorado Watercolor Society State Watermedia



Jean Cole, *Cake 'n Sherbet*.

Exhibition

As she says on page one of her web site,

*"Through my paintings, I want to open the viewer's eye to the beauty that surrounds us in ordinary objects and small intimate places. Beautiful flowers, the bounty of produce, the sparkle of glass or the cast offs at the back door, catch my eye. I often choose to do close-ups in a larger than life scale to bring into focus the everyday things in life and cause the viewer to pause and to reflect on their exceptional qualities."*

Carefully composed, incredibly well crafted, and beautifully painted, her work is a treat to the eye and the mind. I can't wait. You don't want to miss this presentation. See you on the 15th.



## TABLE OF CONTENTS

## PAGE 2:

DATES FOR CWS MEETINGS, EXHIBITS & EVENTS

SKETCH CRAWL!

## PAGE 3:

PRESIDENT'S MESSAGE

## PAGE 4:

MEMBER PROFILE

## PAGE 5:

BOARD IN BRIEF

CLASSES & CALLS

## BACK PAGE:

MEMBERSHIP RENEWALS DUE!

## MISSION STATEMENT

The Colorado Watercolor Society is an organization dedicated to uphold the highest standards and principles of art and to promote, encourage, educate and foster an interest in fine art in all media, especially watermedia.

The Colorado Watercolor Society meets at the First Plymouth Congregational Church, 3501 South Colorado Blvd. in Englewood, (southwest corner of Hampden Avenue and Colorado Blvd.) in the Plymouth Hall. The Collage newsletter is published monthly (except July and December) to all CWS members.

## TO SEND ARTICLES AND IDEAS

## OR TO SUBMIT ADS

## CONTACT:

David Castle, Editor  
editor@coloradowatercolorssociety.org  
303-521-8361

## DATES FOR CWS MEETINGS, SHOWS & EVENTS



### CWS REGULAR MONTHLY MEETINGS

- North Critique Group: No meetings until September (Chairperson: Lillian Montoya)
- Tuesday, June 15, 2010: Board Meeting 4:30 p.m.
- Tuesday, June 15, 2010: General Meeting 7:00 p.m.
- South Critique Group: No meetings until September (Chairperson: Suzanne Bartlett)
- Wednesday, July 28, 2010: Submission deadline for the August *Collage* (no July issue!) and for website updates

### UPCOMING CWS EXHIBITS

#### CWS New Trends Exhibition

Republic Plaza - Downtown Denver, CO

Exhibit Dates: August 30 - November 3, 2010

Co-Chairs: Barbara Wilson and Pat Foster

Juror: Andra Archer

- Friday, June 18, 2010: Entries Due
- Friday, July 9, 2010: Notifications Sent
- Friday, September 10, 2010: Opening Reception

#### CWS 2010 Member Exhibition

Michener Library - Univ. of Northern Colorado  
Exhibit Dates: Nov. 12 - December 17, 2010

Co-Chairs: Mary Jo Ramsdale and Pat Foster

Juror: Dick Farley

- Monday, August 9, 2010: Entries Due
- Friday, September 3, 2010: Notifications Sent
- Friday, November 12, 2010: Opening Reception

### CWS 2011 State Exhibition

Foothills Art Center - Golden, CO

Exhibit Dates: March 17 - May 2, 2011

Juror: Soon Warren

- Prospectus in the November *Collage*

### UPCOMING GENERAL MEETING PROGRAMS

June: Jean Cole - Painting Demonstration

July: No General Meeting!

August: No General Meeting!

September: Ice Cream Social

### UPCOMING CWS WORKSHOPS

#### Gene Youngmann - Plein Air

June 4, 5, & 6, 2010 in Georgetown, CO

#### Ted Nuttall - Portraiture

July 5, 6 & 7, 2010 in Lakewood, CO

July 9, 10 & 11, 2010 in Lakewood, CO

#### Peggy Stenmark - Ink Resist

September 10, 11, & 12, 2010 in Lakewood, CO

#### Virginia Cobb

October 12 - 15, 2010 (location TBD)

#### Stan Miller

October 18 - 22, 2010 in Lakewood, CO

## URBAN SKETCH CRAWL RUMORS CONFIRMED!

The *Collage* has confirmed that a Sketch Crawl is indeed planned for Saturday, June 19. The planned starting location is the Ninth Street Historic Park on the Auraria campus, where 13 Victorian homes, a market and two churches sit, waiting to be drawn, painted, photographed or just contemplated. It is believed that sketchers would move on to Larimer Street to observe shoppers, diners and imbibers and perhaps do some of the latter, themselves. Eventually, this whole, possibly sordid, mess will wind up at Confluence Park, where revelers—make that “participants”—may wade in the river or

ride the Platte River Trolley to destinations unknown. Last summer's sketch crawls were a big success and CWS members are encouraged to participate in this fun event. We need an indication of who plans to attend, so contact our not-so-secret informant, Pat Dall, at [paddall@yahoo.com](mailto:paddall@yahoo.com) or 303-798-5805.



## MESSAGE FROM THE PRESIDENT

By Sydney Eitel, President Colorado Watercolor Society



## WESTERN FEDERATION OF WATERCOLOR SOCIETIES

Today the Western Federation of Watercolor Societies (WFWS) is 12 member societies strong. In 1975, when WFWS was begun a goal was set to include 12 societies. In this year of 2010, 12 watercolor societies were present in the 35th year of WFWS. The societies that are a part of WFWS are: Arizona Watercolor Association, Colorado Watercolor Society, Idaho Watercolor Society, Nevada Watercolor Society, New Mexico Watercolor Society, San Diego Watercolor Society, Southern Arizona Watercolor Guild, Southwestern Watercolor Society, Utah Watercolor Society, Watercolor Society of Oregon and West Texas Watercolor Society.

In 1995, Janet Kirk encouraged CWS to investigate becoming a member of WFWS. Her encouragement planted the seed. Unfortunately, Janet passed away in May of 2006. Arlene Bruns, who was then president of CWS, took up the challenge and with Janet's encouragement helped to get CWS involved in WFWS. Arlene's persistence and enthusiasm lead the way for CWS to become a member of WFWS in 1997. Since that time, CWS has had 140 paintings displayed in WFWS exhibitions over the past years through 2010 and more than 5 CWS members have become Signature Members of WFWS.

In June 2007, CWS hosted the 32nd Annual WFWS Exhibition held at the Arvada Center of the Arts and Humanities; Arlene Bruns served as the project manager with a committee of seven CWS members working with her. Members of the 32nd Committee included Diane Fechenbach, Tour; Barbara Garrity, Hospitality; Pam Hake, Treasurer & Awards; Carla Rouse, Secretary & Publicity; Patricia Rucker, Graphics & Printing; David Wicks, Shipping & Framing; Gene Youngmann, Exhibition Manager & Facility. Also serving on the committee but having left before the event were Vi Gallagher and Celine Krueger. In 2016, CWS will again host the WFWS Exhibition.

Gene Youngmann and I attended the 35th WFWS Exhibit in Salt Lake City, Utah. The first thought that comes to mind in this host city is flowers. Outside the Tabernacle, there are the

most spectacular flower gardens. Tulips standing 2 ½ feet tall with heads bigger than your hand in every color imaginable. The streets are all numbered rather than named. The city is laid out in such logical order that it is very easy to find your way

around. And then there are the people who worked so diligently at putting on this spectacular exhibit. They opened their homes for all 50 -70 people to come in and eat. The vans carried us from house to house for each of the courses of the meal. And can those Utahans cook!

Pam Hake, Ann Johnson and Naum Katsenelson from CWS, received awards from the WFWS exhibit held in the Utah Cultural Center. The exhibit was beautiful and we found that 3 paintings had sold before the opening began. There was a piano and violins, food and wine... and 100 spectacular paintings. Nice work Utah!

Next year, New Mexico will host the 36th WFWS Exhibit in Albuquerque. Santa Fe is only 1 hour away so plans are being made to tour there. The Exhibition will be from May 6th to June 5th. Deadline for entries will be November 15th 2010. I hope you will consider supporting this exhibit with your entry. We had a great presence in Utah and I would like to see us do it again in New Mexico. WFWS is a wonderful opportunity for you to experience something bigger than our State Exhibition. The juror for this exhibit will be Dale Laitinen. His website is: [www.dalelaitinen.com](http://www.dalelaitinen.com).

Get your paint brushes wet with color and paint, paint, paint. Happy Painting!



Sydney Eitel, *Poppy*, acrylic, 6 x 6 inches.

## MEMBER KUDOS

- CWS signature member **Ann Kurz Chambers** sold her painting "Ancient City of Light" at the CWS 2010 State Exhibit. Ann also had her painting "Mayan Plazas" juried into the National Juried show at the Farmington Museum, New Mexico which is being held from May through July of 2010.
- CWS signature member **Camille Scott** was accepted into the Gilpin Cty Art Show in Central City, Colorado. The show runs from June 5 to August 14, 2010.
- CWS signature member, **Valli McDougale** and her daughter, Megan Davis, both had artworks accepted in the Arvada Fine Arts Guild Spring Exhibition, a juried show at the Arvada Center for the Arts and Humanities. Opening for the Exhibit was Thursday, May 20, 2010.



## Member Profile: Carol Hunsaker

By Lisa Manners, CWS Member



Carol Hunsaker's paintings command your attention. Their vivid bold colors catch your eye and the intricate patterns and variety of textures draw you in. Above all, they radiate excitement and energy.

Eight years ago Carol tried watercolor and was hooked on painting. She loves to experiment and try new materials and methods. For a while she worried about finding her "niche." But she has come to realize that her niche is experimental art and that what she does will continue to change and evolve.



Carol Hunsaker, *Moon Cactus*, watercolor, 11 x 14 inches.

watercolors sat on top of the plastic surface, with the colors bright, true and luscious. The first painting she submitted to a juried show was on Yupo, and it was accepted into the prestigious Western Federation show. Since then, she has earned a "Best in Show" from CWS New Trends, a "First Place in Mixed Media" in the Colorado Artists Exhibit and was recently juried into the Rockies West National Exhibit. As co-chair of this year's CWS State Show, she has gained a wealth of knowledge of how a show is put together. Her business background is helpful, and she enjoys the teamwork with her fellow volunteers.

Currently, Carol enjoys working with collage, painting her own collage paper. "It is like solving a puzzle," she muses. She reads tons of books and explores artists' websites for inspiration. "In the background, there is always an art video running in my head with ideas about things I would like to try." A future goal is to teach her own workshop, sharing her love of experimental art with people who have never tried painting.



Carol Hunsaker

Carol prefers acrylics for abstract work. She usually doesn't start with a subject in mind, but just begins to paint. She sums up her approach, "Just do it. Try something, and if you don't like it, wipe it back and do something different. Don't think too much about what you are doing. Learn to trust the creative process and keep trying different things. Even when a painting doesn't work, you learn from the experience."

Since Carol crunches numbers in her job, she finds painting a

welcome creative outlet. As she is self-employed, she has flexibility to attend workshops and to allocate chunks of time to painting. She paints three to four days a week, working on several paintings at once. Although she has a studio, it is used to store art materials. She prefers to paint in her well-lit kitchen.



Carol Hunsaker, *Shazam*, watercolor on yupo, 20 x 26 inches.

Early on, Carol was attracted to Yupo. She liked the way



Carol Hunsaker, *Propensity*, acrylic, 22 x 28 inches.

## ARTIST CLASSES & CALLS

### Classes

- **Anita Winter:** Landscape Workshops at The Center for the Arts in Evergreen, CO on June 26th and August 15th from 10am - 3pm. Contact Linda Mellor at 303-674-0056 for more info or email [edu.market@evergreenarts.org](mailto:edu.market@evergreenarts.org).
- **Betty Carr:** Watercolor workshop at Judy Patti's Studio in Littleton, July 9, 10 and 11. Cost is \$195; call 303-798-1345 to register.
- **Chuck Danford:** One-day watercolor workshop at the Ken Caryl Ranch Recreation Center, September 11, 2010,

9a.m. - 4p.m. For information call 303.979.4070 or register at [www.ken-carylranh.org](http://www.ken-carylranh.org).

### Calls

- Opportunity for exposure and potential sales: **The Denver Juror Selection** waiting room would like to feature the artwork of CWS artists in the waiting room where 600 people sit and wait for notification of jury duty 3 times a week. Paintings will hang September and October 2010. If interested call Sydney Eitel at 303-237-3409 or email her at [sydneyeitel@hotmail.com](mailto:sydneyeitel@hotmail.com).

## WFWS 35 CATALOGS

The WFWS 35 Catalogs will be available for pickup at the General Meeting on June 15. In addition, the title for Kathy Pennak's painting was incorrectly printed and appears corrected to the right.



**Cathy Pennak, CWS**  
*Traffic Jam*  
Watercolor - 19.25x14  
\$900

## UPCOMING WORKSHOP: PEGGY STENMARK

INK RESIST AT ITS BEST

Instructor: Peggy Stenmark, CWS

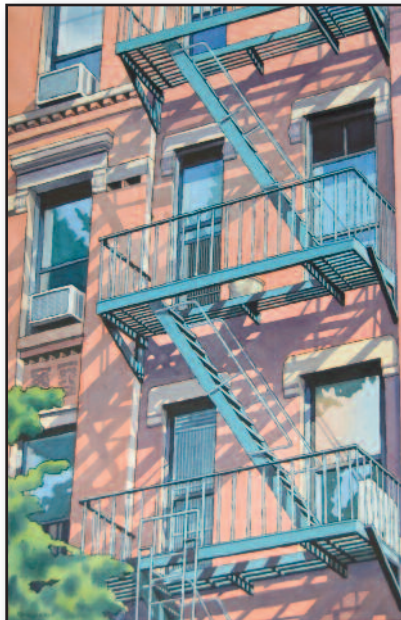
Friday, September 10

Saturday, September 11

Sunday, September 12

9 a.m. to 4 p.m. each day

Join Peggy Stenmark for her "Ink Resist at its Best" workshop this September! Workshop cost is \$175 for members and \$225 for non-members. Workshop sessions will be held at Colorado Mills Mall, 9 a.m. to 4 p.m. daily. Contact Terrey Harrod at 303-981-6004 for more information or to register.



Peggy Stenmark, *Light + Geometry = NYC*.

## THE BOARD IN BRIEF

By Camille Scott,  
Corresponding Secretary



- Sydney Eitel called the meeting to order. Minutes from April were read and approved.
- Sydney reported on her trip to Salt Lake City for the WFWS, seems a great time and a wonderful show. Pam Hake, Ann Johnson, and Naum Katsenelson were presented with their awards during the meeting.
- The slate of officers was voted on through a mail-in ballot and a show of hands of the members present on May 18th. They will be sworn in at the June meeting.
- Randy Hale is challenging all members to go to the website this month. Please check your listings, info, website links, email, etc. If you see a problem or haven't yet gotten your listing set up, contact Randy for the proper procedure to follow. Remember, the more often we visit the site, the closer to the front page in Google we will be listed.
- Terrey Harrod reminded us about the Gene Youngmann Workshop scheduled for June 4-6, 2010. If you are interested in attending contact Terrey at 303-981-6004.
- Reports were given by Janice Hanson, Treasurer, Carla Rouse, Membership, and Pat Foster, Show Chairman.
- Reminder: Membership Dues are due now-- these can be paid online for your convenience.
- Paul Foster reminded us that we were in for a real treat -- Gene Youngmann gave a great presentation on Plein Air Painting with support staff!! Thanks to all!! Next month our presenter will be Jean Cole.
- The meeting was adjourned at 6:30pm.

*Visit the CWS website for complete Board and General Meeting Minutes!*

[www.ColoradoWatercolorSociety.org](http://www.ColoradoWatercolorSociety.org)





P.O. Box 100003  
Denver, CO 80250-0003

NON PROFIT ORG  
U.S. POSTAGE  
PAID  
DENVER, CO  
PERMIT NO. 5226

Submission deadline for the  
August COLLAGE is  
Wednesday, July 28, 2010

*Membership Renewals Due!*

**MEMBERSHIP: YOUR DUES ARE  
NOW OVERDUE.....PLEASE SEND IN  
YOUR MEMBERSHIP RENEWALS for  
the 2010-2011 year!**

Send in your completed renewal form  
(inside) and check to Carla at: 2021  
Dragoon Court, Castle Rock, CO  
80109 or pay with a credit card  
online at:

[www.coloradowatercolorsociety.org](http://www.coloradowatercolorsociety.org).

Please contact Carla at:  
[cdrouse4@msn.com](mailto:cdrouse4@msn.com) or 303-841-  
4136 if you have any changes to  
your contact information.





COLORADO WATERCOLOR SOCIETY

## CALL FOR ENTRIES 2010 MEMBER EXHIBIT

MARI MICHENER GALLERY / JAMES MICHENER LIBRARY  
UNIVERSITY OF NORTHERN COLORADO  
GREELEY, COLORADO

NOVEMBER 12 – DECEMBER 17, 2010

### Schedule

**August 9, Monday**.....Deadline for receiving entry forms, digital entries and fees  
**September 3, Friday**..... Notifications mailed  
**November 1, Monday**.....Hand delivery of paintings (Denver location)  
**November 1-5,**.....Hand delivery of paintings (Greeley)  
**November 12, Friday**.....Opening Reception (4 pm to 6 pm)  
**December 17, Friday**.....Artists pick up artwork

### Juror – Dick Farley

Throughout, Dick Farley's career as an architect/urban designer, he has maintained a presence in the visual arts, having been accepted and won awards in Art By Architects exhibits using various media including acrylic, watercolor and ink wash. He is known for his sketching ability using pencil, pastels, markers, acrylic wash and watercolors. He is also an accomplished printmaker working with etching, dry point, mezzotint, monotype, and recently monoprint. His work has been shown at the James Walker Studio Gallery, Denver and recently at the Double Daughters Salotto also in Denver.

### Entry Form: 2010 MEMBER Exhibit

Mail this completed entry form with digital entries on CD, fee and SASE (\$.61) to:  
**Showcase Art Center, LLC | 1335 Eighth Avenue | Greeley, CO 80631**

Artist \_\_\_\_\_ Phone Number \_\_\_\_\_  
Last First Daytime  
Address \_\_\_\_\_  
Street Address Evening  
\_\_\_\_\_  
City State Zip Code E-mail address \_\_\_\_\_

	Title	Medium	Frame Size (H x W)	Price	A	R
1.						
2.						
3.						

I hereby agree to the liability clause (on other side of this sheet) and to abide by all the rules and regulations set forth in this prospectus.

\_\_\_\_\_  
Artist's Signature

### Notification Card – Must Accompany Entry; Do Not Detach

(type or print info) NAME \_\_\_\_\_

	Title	Price	Accepted	Not Accepted
1.				
2.				
3.				

## ***Eligibility***

This exhibit is open to all CWS members whose dues are current.

## ***Method of Entry – Digital Images Only!***

One to three digital images sized as jpegs under 6" on the longest dimension and 300 dpi resolution. You may send digital images on a CD with fees or e-mail them to: [cpit590937@aol.com](mailto:cpit590937@aol.com). Images must be labeled by "last name.title of work.jpeg". BE SURE TO MAIL IN THE ENTRY FORM.

## ***Entry Fees (non-refundable)***

Entry fee for one image: \$7 total

Entry fee for two images: \$14 total

Entry fee for three images: \$21 total

Make checks payable to *Colorado Watercolor Society*.

## ***Entry Requirements***

- Entries must be predominantly watermedia. Collage and other materials may be incorporated. Grounds can be on yupo, canvas, or any watercolor paper.
- Canvas may be unframed if gallery-wrapped and suitably painted on the edges with wire for hanging on back.

## ***Presentation***

Artwork must meet gallery quality standards. It must be ready to hang with wire on the back. No exposed glass edges and no saw tooth hangers. Mats must be white or off-white (for a list of suggested white mat colors, please visit [www.coloradowatercolorssociety.org](http://www.coloradowatercolorssociety.org)). Colored liners or fillets may not be larger than ¼ inch. No cracked or chipped glass. Artist's choice of glass or Plexiglas if traditionally framed, but traditionally framed paintings with a matted size larger than 18 x 24 inches must be under Plexiglas.

## ***Liability***

Utmost care will be taken in handling paintings; the University of Northern Colorado will insure paintings while at the exhibit.

## ***Commission***

A commission of 30% will be taken on all sales. PAINTINGS MUST BE FOR SALE.

## ***Additional Information***

- Accepted entries must be properly framed and ready to hang, with an ID label securely attached to the back. CWS and Mari Gallery reserves the right to refuse any work not satisfactorily framed or not meeting its standards.
- Detailed delivery instructions will be sent with notification; there will be a Denver delivery location in addition to the Greeley location.
- Information recorded on the entry form is considered final and may not be changed.
- Any requirements of the exhibit not fulfilled will result in disqualification.
- Works juried into this show and not delivered for exhibit will prohibit the artist's entry into this exhibit for two years.
- No exhibited work will be released until the close of the exhibit.
- No sitters will be required.
- To join CWS and enter this exhibit, please complete the membership form and send, along with your dues check, with your entry form. Membership forms are located on the CWS website at [www.coloradowatercolorssociety.org](http://www.coloradowatercolorssociety.org).

## ***Entry Checklist***

- ☐ Entry Form/Notification Card (do not separate)
- ☐ 4-1/8" by 9-1/2" SASE (\$.61 postage)
- ☐ 1, 2, or 3 digital images on CD or emailed (labeled)
- ☐ Entry fee (make check payable to *Colorado Watercolor Society*)

## **Mail completed entry forms to:**

**Showcase Art Center, LLC  
1335 Eighth Avenue  
Greeley, CO 80631**

If you have questions, please contact Colette Pitcher at the Showcase (phone: 970-356-8593).

**Deadline for receipt of entries is  
MONDAY, August 9, 2010**



# • Notice of 2010-2011 Dues Renewal •

## Colorado Watercolor Society Membership and Roster Information

Please fill out this form by printing the information and send it with your check by the deadline: **June 1st**. You need only fill in your name and any membership information that has changed.

☐ **Check here if membership information has changed**

I joined CWS in (Month) \_\_\_\_\_ (Year) \_\_\_\_\_

I am a signature Member ☐

Last Name \_\_\_\_\_ First Name \_\_\_\_\_  
(As you wish your name and information to appear in the Roster)

Spouse's/Partner (Optional) \_\_\_\_\_ E-Mail Address \_\_\_\_\_

Web Site Address \_\_\_\_\_

Postal Mail Address \_\_\_\_\_

City, State Zip \_\_\_\_\_

Phones (H) \_\_\_\_\_ (Wk) \_\_\_\_\_ (Cell) \_\_\_\_\_  
(List only those phone numbers you wish to have in the Roster)

THIS INFORMATION WILL BE USED TO UPDATE THE ROSTER, THE CUTOFF TO ADD INFORMATION IS THE SEPTEMBER MEETING

☐ **Renewal (\$35) or** ☐ **Patron (\$100 or more) or** ☐ **Benefactor (\$500 or more)**

**Nametags are available at the cost of \$7 each and are the responsibility of the member to purchase.**

Please order me a ☐ magnet nametag ☐ pin type nametag. I have included the cost to my membership fee.

YOUR CHECK NUMBER # \_\_\_\_\_ DATE YOU SENT YOUR CHECK \_\_\_\_\_ Total \_\_\_\_\_ Rec'd \_\_\_\_\_

**Please MARK 3 OR MORE (in order of your preference) – WE CAN ALL DONATE A FEW HOURS OF HELP CWS!!!**

### Board Positions

\_\_\_ President  
\_\_\_ President-elect  
\_\_\_ V.P. Programs  
\_\_\_ V.P. Workshops  
\_\_\_ Exhibition Official  
\_\_\_ Membership Official  
\_\_\_ Treasurer  
\_\_\_ Recording Secretary  
\_\_\_ Corresponding Secy.  
\_\_\_ Member at Large

### Exhibition

\_\_\_ Awards/Philanthropy  
\_\_\_ Bin Work  
\_\_\_ Digital Entry  
\_\_\_ Receiver  
\_\_\_ Exhibit Worker  
\_\_\_ Juror Selection  
\_\_\_ Committee

\_\_\_ Reception Organizer  
\_\_\_ Receptions Worker  
\_\_\_ Resumes Notebooks  
\_\_\_ Show Chair: Botanic  
\_\_\_ Show Chair: State  
\_\_\_ Show Chair: Member  
\_\_\_ Show Installation  
\_\_\_ Show Sitter

### Financial

\_\_\_ Bookkeeping  
\_\_\_ Cashiering

### General

\_\_\_ Calligraphy  
\_\_\_ Computer Specialist  
\_\_\_ Education Comm.  
\_\_\_ Historian  
\_\_\_ Librarian  
\_\_\_ Nominating  
\_\_\_ Com. Member

\_\_\_ Parliamentarian  
\_\_\_ Workshop  
\_\_\_ Chair/Organizer  
\_\_\_ Workshop  
\_\_\_ Host/Hostess  
\_\_\_ Workshop Worker

### Web Site

\_\_\_ Maintenance  
\_\_\_ Up-dates

### General Meeting

\_\_\_ Audio and Video  
\_\_\_ Ice Cream Social  
\_\_\_ Critiques  
\_\_\_ Greeter  
\_\_\_ Photo Pool  
\_\_\_ Member Recognition  
\_\_\_ Com.  
\_\_\_ Programs  
\_\_\_ Refreshment

Coordinator

### Publication

\_\_\_ Editor of Newsletter  
\_\_\_ Graphics  
\_\_\_ Mailing Committee  
\_\_\_ Newsletter Reporter  
\_\_\_ Proof Reader

### Publicity

\_\_\_ Publicity  
\_\_\_ Graphics  
\_\_\_ Writing  
\_\_\_ Media Relations  
\_\_\_ Patron Mailing List

### Membership

\_\_\_ Signature Membership  
\_\_\_ Roster

May we furnish your name when requested to outside groups looking for people to do the following?

Judge Art Shows \_\_\_ Yes \_\_\_ No Do Demos or Workshops \_\_\_ Yes \_\_\_ No Do Critiques \_\_\_ Yes \_\_\_ No

**The Collage newsletter is automatically emailed to all members providing a valid email address. If you wish to receive your copy through the US Postal Service, please check box** ☐

You must send in your membership renewal with your check by the June 1, 2010 deadline to: CARLA ROUSE, 2021 DRAGOON COURT, CASTLE ROCK, CO 80109

If you have questions call Carla at 303-841-4136 or email her at: [cdrouse4@msn.com](mailto:cdrouse4@msn.com)

**Due to cost constraints, the newsletter will be your only notification. No statement will be sent. DO NOT SEND YOUR DUES TO THE COLLAGE EDITOR! RETURN THIS FORM WITH YOUR RENEWAL CHECK.**

May 2010

## **CWS Member Roster Updates – June, 2010**

Please contact Carla at [cdrouse4@msn.com](mailto:cdrouse4@msn.com) or 303-841-4136 if you have any changes to your membership contact information.

### **NEW MEMBERS (not in the 2009-2010 Roster)**

**BENNISON , Jo** 303-777-4194  
[Job331@aol.com](mailto:Job331@aol.com)  
2160 S. Grant Street, Denver, CO 80210

**BRANCH, Nancy (Bill)** 720-488-2743  
[nanbran39@aol.com](mailto:nanbran39@aol.com)  
7613 S. Rosemary Circle, Centennial, CO 80112

**BURNES, Lynn (Donald)** 303-388-6900  
[lynnkburnes@earthlink.net](mailto:lynnkburnes@earthlink.net)  
5639 Montview Blvd, Denver, CO 80207

**CASSA, Kay (Joe)** 303-424-1336  
[kaycassa@comcast.net](mailto:kaycassa@comcast.net) cell 303-748-9212  
6353 Pierson Street , Arvada, CO 80004-4518

**GOLDBLATT, Janis (Rusty)** 970-224-2791  
[goldlvs@aol.com](mailto:goldlvs@aol.com)  
[www.janisgoldblatt.com](http://www.janisgoldblatt.com)  
4008 Divine Drive, Fort Collins, CO 80524

**GRAVINA, Gail (Jim)** 303-795-0290  
[gailannegart@gmail.com](mailto:gailannegart@gmail.com) cell 303-257-6490  
5954 S. Coventry Lane E, Littleton, CO 80123

**HENDRIX , Connie** 970-963-6417  
[chendrixstudio@aol.com](mailto:chendrixstudio@aol.com)  
5669 Marble Village Drive, Marble, CO 81623

**JEWELL, Tanya** 303-440-9610  
[tanya@tjoptics.com](mailto:tanya@tjoptics.com)  
4622 Sunshine Canyon Drive, Boulder, CO 80302

**JOHNSON, Elaine** 206-999-2919  
[jalainej@earthlink.net](mailto:jalainej@earthlink.net)  
[www.alainesartgallery.com](http://www.alainesartgallery.com)  
505 9th Avenue #302, Greeley, CO 80631

**JOSLYN, Richard**  
301 Westview Lane, Estes Park, CO 80517

**NELSON, Dorothea "Dori"** 303-279-7217  
[dorinel1@msn.com](mailto:dorinel1@msn.com)  
1350 Orchard Street, Golden, CO 80401

**O'BRIEN, Peggy B.** 303-740-8532  
[peggy.obrien@comcast.net](mailto:peggy.obrien@comcast.net)  
9217 E. Nassau Avenue, Denver, CO 80237

**PINAUD, Marilyn (Edward)** 303-449-1455  
[nedite@me.com](mailto:nedite@me.com) cell 508-868-1100  
5238 Magnolia Drive, Nederland, CO 80466

**SCHEY, Peggy** 303-278-7542  
[peggyschey@hotmail.com](mailto:peggyschey@hotmail.com)  
[www.peggyschey.com](http://www.peggyschey.com)  
5921 El Diente Ct, Golden, CO 80403

**SOLBRIG, Mary Ann (Wayne)** 303-438-8127  
[masolbrig@comcast.net](mailto:masolbrig@comcast.net) cell 303-807-1230  
1201 Clubhouse Drive, Broomfield, CO 80020

**TOPPEL, Karin** 303-681-9990  
[karin@karintoppel.com](mailto:karin@karintoppel.com)  
8347 HOMESTAKE RD, Larkspur, CO 80118

**WEST, Denise** 303-697-0657  
[denisestudio@comcast.net](mailto:denisestudio@comcast.net) cell 720-313-4806  
[www.DeniseBellonWest.com](http://www.DeniseBellonWest.com)  
P.O. Box 925, Indian Hills, CO 80454

**WEXLER, Hildegard (Paul)** 303-688-5783  
[Momwex@msn.com](mailto:Momwex@msn.com) work 303-694-4665  
[www.Genassist.com](http://www.Genassist.com)  
36 Castle Pines Drive North, Castle Rock, CO 80108

**YOUNGMAN, Helga** 303-985-0481  
[hsehm@msn.com](mailto:hsehm@msn.com)  
14186 W. Virginia Drive, Lakewood, CO 80228