

## COLLAGE

September 2009



COLORADO WATERCOLOR SOCIETY

# IT'S SEPTEMBER! LET'S START THE NEW CWS YEAR WITH A TRICHOTOMY OF FUN!

By Pat Dall,  
Vice President - Programs

## We'll GREET. We'll EAT. We'll MEET.

Summer has raced by and on Tuesday, September 15th, another year of CWS begins with a meeting you won't want to miss. It's a triple treat, triple play, triple-whammy of activity!

After our business meeting, we'll **GREET** new members as they introduce themselves and each presents an example of his or her work. (And have we got new members—lots of them!)

It's also our annual Ice Cream Social, so we'll **EAT** a gooey, drippy, delicious creation concocted by our volunteer servers (at your direction) and we'll have a chance to sit and chat and catch up on all the summer's doings, comings and goings.

Finally, we'll **MEET** the members of the Website



More of the new CWS website homepage is revealed... see it all at the September Meeting!

Committee and actually get a test drive of the new website! It has arrived and it's a beauty! Find out how this valuable communication tool can work for you and be sure to thank the volunteers who made it happen!

The meeting is at 7:00 pm at The Plymouth Congregational Church and as always, guests are welcome. Remember--skip dessert at home and come hungry!

## COMING IN SEPTEMBER - THE WEBSITE PREVIEW!

By Sean Willard,  
CWS Web Committee Chair

The website is in the final stages and will be ready to

preview at our September meeting. The Website Committee will give a short presentation on what the website will offer our membership. Our members can expect an exciting new look with all the information needed to stay up to date on the latest exhibits, workshops and news.

We will review the new online payment options and show screen shots of what the website will look like. I'm sure there will be many questions and we look forward to helping everyone get the most out of the new website.

## TABLE OF CONTENTS

### PAGE 2:

DATES FOR CWS MEETINGS,  
SHOWS & EVENTS

### PAGE 3:

PRESIDENT'S MESSAGE

### PAGE 4:

CALL TO ARTISTS!  
CWS CANDID CAMERA

### PAGE 6:

CWS MEMBER KUDOS

### PAGE 7:

FALL LIBRARY UPDATE

### INSERTS:

PLYMOUTH SHOW FORM  
WFWS35 PROSPECTUS  
CWS ROSTER UPDATES

## MISSION STATEMENT

The Colorado Watercolor Society is an organization dedicated to uphold the highest standards and principles of art and to promote, encourage, educate and foster an interest in fine art in all media, especially watermedia.

The Colorado Watercolor Society meets at the First Plymouth Congregational Church, 3501 South Colorado Blvd. in Englewood, (southwest corner of Hampden Avenue and Colorado Blvd.) in the Plymouth Hall. The Collage newsletter is published monthly (except July and December) to all CWS members.

## TO SEND ARTICLES AND IDEAS OR TO SUBMIT ADS CONTACT:

David Castle, Editor  
David@DavidCastleArt.com  
303-521-8361

## DATES FOR CWS MEETINGS, SHOWS & EVENTS



### CWS Monthly Meetings and Events

- Tuesday, September 8, 2009: North Critique Meeting 10:00 a.m. (Standley Lake Library)
- Tuesday, September 15, 2009: Board Meeting 4:30 p.m.
- Tuesday, September 15, 2009: Ice Cream Social & General Meeting 7:00 p.m.
- Friday, September 25, 2009: South Critique Meeting 9:00 a.m. (Koelbel Library)
- Wednesday, September 30, 2009: Submission deadline for the October *Collage*

### CWS 2009 New Trends Exhibit

Co-Art Gallery – Denver, CO  
Exhibit Dates: September 14 - 27, 2009

Co-Chairpersons: Marge McMonagle and Gwen Marie Ehrlich  
Juror: Nancy Condit

- Monday, September 14, 2009: Delivery of Paintings, 9 a.m. - 11 a.m.
- Friday, September 18, 2009: Opening Reception, 6-9 p.m.

### Ted Nuttall Workshops - October, 2009

Colorado Mills - Golden, CO

Contact: Elaine Campbell, V.P. of Workshops

- Session 1: Monday, October 12 - Friday, October 16, 2009
- Session 2: Monday, October 19 - Friday, October 23, 2009

### CWS First Plymouth Congregational Art Show

First Plymouth Church – Englewood, CO  
Exhibit Dates: October 12 - November 23, 2009

Contact: Pat Foster, Exhibition Official

- Friday, October 2, 2009: Intent to Participate Form Due
- Monday, October 12, 2009: Hand Delivery of Framed Paintings
- Monday, November 23, 2009: Pick up Framed Paintings

### CWS 2009 Member Show

Old Firehouse Art Center – Longmont, CO  
Exhibit Dates: November 13 - December 19, 2009

Co-Chairpersons: Nancy Sullo and Martha Williams  
Juror: Richard Schilling

- Monday, October 5, 2009: Entry Forms Due
- Friday, November 13, 2009: Opening Reception

## PAUL FOSTER TAKES OVER AS VP OF PROGRAMS

When no one stepped forward to fill the VP Programs position on the board last spring, Pat Dall agreed to a third year of planning and executing meeting programs.

This summer, Paul Foster, believing that every member must contribute to an organization for the organization to flourish, stepped forward and agreed to take Pat's position. Pat, believing that no volunteer should be denied a chance to contribute (and happy for a break herself), has resigned, effective September 15.

"Being on the board has been an exciting, productive and most enjoyable experience," says Pat. "I thank everyone for the excellent attendance we have had at meetings, the nice comments people have made and I look forward to new ideas and great meetings with Paul in charge."

---

## MORE DETAILS ON UPCOMING CWS EXHIBITS

### New Trends Exhibit

The opening of the New Trends Exhibit at the Co-Art Gallery on Santa Fe Drive is fast approaching! Juror Nancy Condit chose 90 paintings out of 157 entries received. A total of 53 artists are represented in this show.

### First Plymouth Congregational Art Show

CWS has been asked to exhibit our art work again. Unfortunately we were contacted after the August *Collage* was published so this is short notice.

Last year CWS sold four paintings and received a lot of positive feedback on the quality of the paintings that were exhibited.

This is not a juried show and there is not a size limitation. The first 60 painting that are entered will be hung. Entry Form is in the *September Collage*.

### Western Federation 35th Annual Exhibit

Western Federation of Watercolor Society's 35th annual exhibit will be in Utah in 2010. Now is the time to be painting your submissions. Entries will be due on November 15, 2009. The prospectus will be on the CWS website ([www.ColoradoWatercolorSociety.org](http://www.ColoradoWatercolorSociety.org)) and is included in your September issue of the *Collage*. Start your paintings now!

### CWS 2010 State Watermedia Exhibit

Exhibit Dates are March 4 - 15, 2010; more details and the Prospectus are coming soon!

## MESSAGE FROM THE PRESIDENT

By Sydney Eitel, President Colorado Watercolor Society



## PROSPECTUS 101: DON'T GET DISQUALIFIED BEFORE YOU ARE IN



Sydney Eitel, *Walking Into The Sunrise*, watercolor, 15 x 23.5 inches.

### Exhibition Mat Colors

#### Crescent Museum:

Alabaster, Antique White, Brite White, Moonlight, Off White, Optic White, Palm Beach White, Script White, Very White and White.

#### Bainbridge Museum:

Chalk, French White, Frost, Igloo, Matte White, Snowflake, Spanish White and Talc.

**Crescent Ultimat:** Baker's White, Chalk, Coconut Milk, Dove, Pure White, White Art and White Ripple.

**Artique:** Buff, Chalk, Everest, Off White, Snow White and White Cap.

**Rising:** White, Warm White and Antique White.

When you are framing your art, please use thicker wire that is coated. If a few of you want to get together to order a large roll, I can get it for you for \$20. It is enough to last for years. This is important because the skinny wire cuts the hands of the hangers. Make sure your ends are taped or covered with something to protect the hands of the handlers.

The back of your painting should be protected by foam core or clean mat board bound by a simple metal or wood frame unless being placed in the bin, in which your matted piece should be shrunk wrapped or sealed into a plastic clear bag made for this purpose. The backing should be the same whether framed or not. Many exhibitions are requiring plexi-glass versus glass. CWS requires this on 1/2 sheet paintings and larger.

I don't like digital entries any more than many of you, but we just have to grow and learn in this area. Slide film is disappearing. Images from your digital

camera can be downloaded onto a cd or your computer as easily as developing slides. The companies who shot photos to slides of your beautiful work in the past are able to shoot digital images for you now. The downloaded photo should only contain your painting with nothing else showing (same as slide requirements). No folders, no mat board, only your painting. Please don't let this keep you from entering your work into shows. Ask questions and read information, experiment with it or get a friend to help. We will have some workshops to help guide you through this new digital age. I have a very good handout written by Ellen Fountain on "Resizing Digital Images for Art Competitions/Exhibitions" complete with "how to" photos. Please contact me if you would like a copy.

I cannot stress enough how important it is to submit your entries according to the requirements printed in the prospectus. Especially with the digital entries, the sizing can vary from show to show so pay attention. Then when you go to mat and frame your art, make sure you are following the guidelines in the prospectus. I had a painting disqualified at delivery time for being framed too large for an exhibition and I learned to pay very careful attention to each prospectus for each exhibit. Please enter your work and follow the requirements and let's have a great year of exhibitions.

May you have a wonderful month of painting,  
Sydney Eitel

I hope you have had a wonderful summer of painting. As we come back together this fall, there are exciting meetings planned and new opportunities to show your work. WFWS 35 is fast approaching, see the enclosed Prospectus. Check out the upcoming exhibit details on Page 2 of this *Collage* issue and note that our own 20th State Exhibition will be here before we know it.

It is time to think about your entries. There are some things you need to pay attention to with entries and submissions, especially with the changes in how you enter. Each prospectus is different and needs to be read thoroughly to avoid disqualification.

Are you aware that CWS and WFWS require top mats to be white or slightly off-white? If you use a liner color or white it must be ONLY 1/4". Mat borders should be cut to be a minimum of 3". WFWS sometimes requires wider. Check to make sure double mats are acceptable.

Here is an updated list compiled of "white", "archival" suggested mat colors used in exhibitions. This complete list with item numbers will also be posted on the CWS website.



# CALL TO ARTISTS



## Call To Artists

The **Colorado Artists Guild** would like to announce our 14th Annual Artists of Colorado Exhibition. The juried exhibit is open to all Colorado artists who produce 2D or 3D art. It will be held at the 910 Gallery in the Santa Fe Arts District for six weeks from Friday, October 16th to Saturday, December 5th. Awards of \$3,000 in cash and prizes will be given. Deadline for entry is Friday, September 12. For the prospectus, visit [www.coloradoartistsguild.org](http://www.coloradoartistsguild.org). For more information or questions, call Fred Luger at (303) 947-1820 or email Fred at [lungerfinearts@earthlink.net](mailto:lungerfinearts@earthlink.net).

**Lapis Gallery "Inspired" Art Show.** Lapis Gallery is seeking artists to create artwork for our "Inspired" Art Show. This show will be featured as part of Denver Arts Week 2009. The show will open on the First Friday Art Walk, November 6th, 2009 and stay up through the end of the year. There will be a second artist reception on the First Friday, December 4th, 2009. All mediums are welcome. For more info and an entry form, contact Michael at Lapis 720-331-6402 or email [Michael@LapisArts.com](mailto:Michael@LapisArts.com).

## Workshops & Classes

Upcoming workshops at Judy Patti's Studio: Frank Francese, September 11-13 and Betty Carr, October 2-4. Contact Judy at 303-798-1345 for details.

Chuck Danford: Watercolor Classes for all levels at the Ranch House in Ken Caryl Ranch. Wednesdays, 9am - 12noon, September 9 - October 14 and Fridays, 9am - 12noon, September 11 - October 16. Register at [www.ken-caryl-ranch.org](http://www.ken-caryl-ranch.org) or call 303-979-4070.

Becky Enabnit Silver: Watercolor classes starting in September. Wednesdays, 6 - 9pm at Aar River Gallery in Westminster. Contact 303-426-4114 or visit [www.aarrivergallery.com](http://www.aarrivergallery.com).

Peggy Morgan Stenmark: Vibrant Watercolors Using Ink Resist 2-day workshop. September 24 and 25, 9am - 4pm at Aar River Gallery in Westminster. Contact 303-426-4114 or visit [www.aarrivergallery.com](http://www.aarrivergallery.com).

Tony Couch: Watercolor Painting Workshop at Parker Bible Church in Parker, CO. May 17 - 21, 2010. Contact Dodie Davis to reserve your spot at 303-589-4495 or visit [www.DodieDavis.com](http://www.DodieDavis.com).

*Know of a good "Call To Artists!" opportunity to share with CWS members?  
Send them in to David Castle, Collage Editor  
by the next issue deadline!*

## CWS CANDID CAMERA

### CWS Member Photos



*Above: Thank You Service  
Honorees Doug & Chris  
Gilmore of Mile High Framing  
Services with Diane Halley &  
Randy Hale.*

*Right: CWS Member Marian  
LaFleur receives a CWS  
Lifetime Membership Award.*



*Above: CWS Service  
Honoree David Wicks  
with Barbara Garrity  
at the June General  
Meeting.*

*Right: CWS Member  
Anita Winter at the  
PPWS International  
Watermedia XVI  
Opening in August.*



## ANNOUNCEMENTS FOR MEMBERS

### GILMORE ART CENTER *more than a gallery*

2119 Curtis Street Denver CO 80205 • 303-308-1270

### MARTY FATHER PHOTOGRAPHY



### YOUNGMANN



### GENE SON WATERCOLORS

OPENING RECEPTION

FRIDAY, SEPT. 4, 2009 6 TO 9 P.M.

Artists in Attendance - Show runs to Sept. 26, 2009

Mon.-Fri. 9am to 5pm, Sat. 11am to 4pm & Closed Sun.

[www.GilmoreArtCenter.com](http://www.GilmoreArtCenter.com)

## YOUR IMAGES NEEDED FOR CWS MEMBER SHOW!

Don't forget to enter your miniatures (12 X 12" maximum framed size) in the CWS Member Show to be held November 13 - December 19, 2009. Entries are due October 5, and the info and entry form was in your August *Collage* issue.

This is an unjuried show, so no images are necessary. HOWEVER, we *are* looking for images for the show postcard.

If you would like to submit any of your images for consideration, please send them directly to Paula Peacock at the Old Firehouse Art Center. Her email is [firehouseart@mac.com](mailto:firehouseart@mac.com). Images should be high resolution jpegs and are due by October 5.

## THE BOARD IN BRIEF

By Janice Hanson,  
Treasurer



- The meeting was opened by Sydney Eitel. The minutes of the June meeting and a special website presentation meeting in July were approved.
- An update on the initial website launch in September was given by Randy Hale. All work done by our website designer will be consolidated in Phase I, eliminating the need for Phase II. The money budgeted for Phase II will be used to design an enhanced Member Gallery section. Preliminary plans allow for the immediate linking of member names to existing individuals' websites while more elaborate displays are being explored.
- Pat Foster gave an Exhibition Report. Venues are being looked at for the 2010 Member Show and 2011 State Show (because the new Colorado History Museum will be under construction). While the 2010 State Show will be held at the existing Colorado History Museum as part of their grand finale in that building, the show has no Co-Chairmen at this time. Please consider volunteering to co-chair the 2010 State Show.
- Upcoming programs will include an October demonstration by our workshop presenter Ted Nuttall. CWS is looking for an Audio Visual Technician to help with running the projectors and presentations on CD. Gene Youngmann has been doing this graciously for us for a number of years and would like to step down from this position..
- The meeting was adjourned at 1:00 pm.

Need to update your membership info?  
Have a new mailing address or email  
address? Didn't sign up to receive your  
Collage newsletter in the postal mail?

Contact Carla Rouse today!  
Call 303-841-4136 or  
email [cdrouse4@msn.com](mailto:cdrouse4@msn.com).



## 2009-2010 CWS EXECUTIVE BOARD



The 2009-2010 CWS Executive Board was sworn in at the June General Meeting. Please find a moment to thank each of our Board Members for their hard work and dedication to helping keep CWS moving forward!

**President: Sydney Eitel**

sydneyeitel@hotmail.com | 303-237-3409

**Immediate Past President: Randy Hale**

randyhale@halegallery.com | 303-720-5116

**President-Elect: Chuck Danford**

ckdanford@comcast.net | 303-758-9090

**Vice President - Programs: Paul Foster**

PJFDesign@comcast.net | 303-741-5018

**Vice President - Workshops: Elaine Campbell**

art\_bug@hotmail.com | 303-973-6950

**Recording Secretary: Holly Beazley**

hpbeazley@aol.com | 720-283-1534

**Corresponding Secretary: Camille Scott**

cscott404@msn.com | 303-346-3837

**Treasurer: Janice Hanson**

jchanson52@aol.com | 303-759-3752

**Exhibition Official: Pat Foster**

foster\_patsteve@hotmail.com | 303-721-9570

**Membership Official: Carla Rouse**

cdrouse4@msn.com | 303-841-4136

**Board Member at Large (2008-2010): David Castle**

david@davidcastleart.com | 303-521-8361

**Board Member at Large (2009-2011): Diane Fechenbach**

dfechenbach@qwestoffice.net | 303-791-4591

## CWS MEMBER KUDOS

Congratulations to CWS member **Fran Hahn** who was presented with the Barbara Wakeman Award this year. The award is given annually to a Windsor Garden's Art Club member for outstanding service.

CWS member **Darlene Kuhne** was one of 30 artists with artwork juried into the Denver Modernism Show being held August 28-30, 2009. Darlene was also juried into the Redstone 14th Annual Labor Day Art Show and participated in the Chili Festival at the Lakewood Heritage Center in late August.

Congratulations to CWS members with artwork juried into the Rocky Mountain National Watermedia Exhibit at the Foothills Art Center, including: **Melissa Barrett** and her painting "Jenny & Chris".

Congratulations to CWS members with artwork juried into Pikes Peak Watercolor Society's International Watermedia XVI exhibit juried by Thomas Owen, including: **David Castle**, **Chuck Danford**, **Valli McDougale** (Jack Richeson Award), and **Anita Winter** (Honorable Mention Award). This year's exhibit is at the Sangre de Cristo Arts Center in Pueblo and runs August 15 - October 17, 2009.



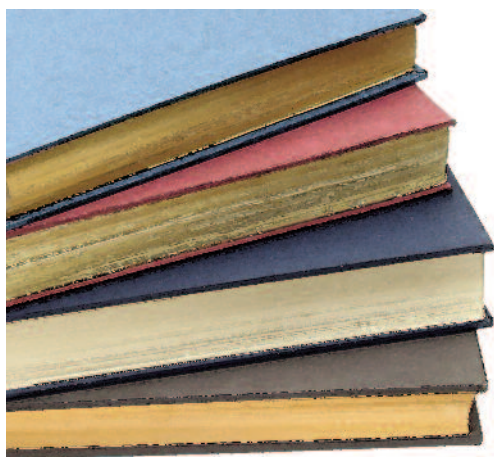
CWS Executive Board swears in at the June General Meeting.

## IN MEMORIAM

CWS Signature Member Luverne F. Schoendaller died on June 5, 2009 at 92 years old. Luverne served as a meeting hostess for members for a long time. The meetings were held in the mornings in her own home. She made everyone so welcome and was such a kind hostess. A donation of \$25 has been donated by CWS in honor of her to our Memorial Award Fund. CWS is sorry to see her family experience the loss of this precious artist.

# FALL 2009 LIBRARY CHANGES

By Sue Williams, CWS Librarian



Thank you for giving me the opportunity to be your librarian. It has been fun setting up the system and implementing the program. Thanks to all of you who have expressed interest in what the library had to offer - your

participation has been a great encouragement. Now it is time to pass on the baton to a new librarian. With great anticipation, Elaine Bergner has accepted the position of CWS Librarian. She has been working with me for a month or so and is ready to continue on as the person "in charge". Please welcome her as warmly as you did me.

As in the past our library is still growing thanks to generous people both in and out of the society. This summer, Bruce C. Paton, M.D. (not a member) donated a number of very nice books through the efforts of Chuck Danford. Diane Calkins has also donated recently. To add to that we have some new items which were purchased using money budgeted for the library expansion. Check over our new listings and add them to your private list of library materials. As always, the full library listing is on the CWS website. Do check out our listing and look over the many items available for you to borrow.

To check out any item simply email our new librarian Elaine Bergner at [Musiki@comcast.net](mailto:Musiki@comcast.net) anytime during the month up through the day before our monthly meeting. Elaine will then deliver your choices to you at the General Meeting that month. A \$20.00 check made out by you to CWS will be your deposit for one or more items. (ONLY ONE DVD OR VHS PER PERSON PER MONTH, AS THEY ARE EXTREMELY POPULAR ITEMS) The items can be checked out for one month at which point you return them to Elaine at the next general meeting and your deposit check will be returned to you. It is that simple.

In September, plan to visit the library table and meet Elaine!

## New Library Items Recently Added

### Books

Acrylic Revolution, by Nancy Reyner  
Capturing Nature in Watercolor, by Philip Jamison  
Chinese Landscape Painting, by Sherman E. Lee  
Complete Guide to Watercolor Painting, by Edgar A. Whitney  
Crawshaw Paints on Holiday, by Alwyn Crawshaw  
First Impressions, by Edward Norton Ward  
How to Photograph Everything, by Tom Ang  
Learn Watercolor the Edgar Whitney Way, by Ron Ranson  
My Way With Watercolor, by Claude Croney  
Nature Drawing, by Clare Walker Leslie  
Painting Dynamic Watercolors, by Domenic DiStefano  
Painting Landscapes in Watercolor, by Roland Hilder  
Painting Light and Shadow, by William B. Lawrence  
Painting the Many Moods of Light, by Rachel Rubin Wolf  
Painting the Unposed Figure in Watercolor, by David Sanmiguel and Vicenc Ballestar  
Painting Water in Watercolor, by Ann Whalley  
Painting with the White of Your Paper, by Judy Wagner and Tony Van Hasselt  
Perfecting Your Watercolors, by Ron Ranson  
Starting with Watercolor, by Roland Hilder  
The Challenge of Watercolor, by John Blockley  
The Half-Hour Painter, by Alwyn Crawshaw  
The One-Hour Watercolorist, by Patrick Seslar  
The Watercolor Fix-It Book, by Tony Van Hasselt and Judi Wagner  
Tony Couch's Keys to Successful Painting, by Tony Couch  
Transparent Watercolor Wheel, by Jim Kosvanec  
Transparent Watercolor, My Second Career, by William H. Condit  
Watercolor Painting Smart, by Al Stine  
Webb on Watercolor, by Frank Webb  
Mastering Composition, Techniques and principals to Dramatically Improve Your Painting, by Ian Roberts

### Video

Collage: Paper, Patterns and Glazing, by Anne Bagby (DVD)  
Color Power, The Path to Visualizing Energetic Color, by Carl Dalio (DVD)  
Urban Landscape in Watercolor, by John Salminen (DVD)  
Pollock (VHS)



P.O. Box 100003  
Denver, CO 80250-0003

Go to [www.ColoradoWatercolorSociety.org](http://www.ColoradoWatercolorSociety.org)  
and see the COLLAGE in color!

- **Tuesday, September 8, 2009:**  
North Critique Meeting – 10:00 a.m.
- **Tuesday, September 15, 2009:**  
Board Meeting – 4:30 p.m.
- **Tuesday, September 15, 2009:**  
General Meeting – 7:00 p.m.
- **Friday, September 25, 2009:**  
South Critique Meeting – 9:00 a.m.

Submission deadline for the  
October COLLAGE is  
Wednesday, September 30, 2009

NON PROFIT ORG  
U.S. POSTAGE  
PAID  
DENVER, CO  
PERMIT NO. 5226

## SERVICES FOR MEMBERS

### *Your Ad Could Appear Here!*

All ads are black and white.  
Artwork must be camera-ready in a PDF or JPEG format.  
Photos must be 300 dpi.

Ad Size	Dimensions (W x H)	Non-member Cost	CWS Member Cost
1/2 page vertical	3 5/8" x 10"	\$75	\$67.50
1/2 page horizontal	7 1/2" x 4 3/4"	\$75	\$67.50
1/4 page vertical	3 5/8" x 5"	\$60	\$54
1/4 page horizontal	5" x 3 5/8"	\$60	\$54
1/8 page	2 1/2" x 1 7/8"	\$25	\$22.50

### CWS NEEDS YOUR HELP!

#### Open Volunteer Positions

CWS has many opportunities for you to get involved, have fun and make things happen! Please contact any Board Member for more details. Some urgent needs include:

#### Vice President - Workshops

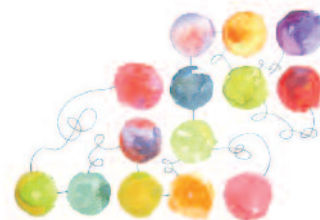
We need to fill this Board position ASAP!

#### 2010 State Exhibit Chairperson(s)

Help get our State Exhibit going!

#### Audio Visual Technician

We need help to "retire" Gene!



[www.ColoradoWatercolorSociety.org](http://www.ColoradoWatercolorSociety.org)



# **CWS FIRST PLYMOUTH CONGREGATIONAL ART SHOW**

**October 12 - November 23, 2009**

First Plymouth Congregational Church  
3501 South Colorado Boulevard  
Englewood, Colorado

## **CALENDAR**

Friday, October 2: Intent to Participate Form due

Monday, October 12 (9:00am - 10:30am): Delivery of paintings

Monday, November 23 (9:00am - 10:30am): Pick up paintings

- 
1. This show is open to all CWS members whose membership is up-to-date.
  2. This is NOT a juried show and entry does not count toward Signature membership.
  3. Each CWS member may enter one framed painting.
  4. There is no size limitation.
  5. All paintings must be water-based medium with proper supporting painting surface (i.e. watercolor paper). Paintings on yupo and watermedia canvas ARE allowed for this show.
  6. All paintings need to be framed (gallery-wrapped canvases must have finished sides) and ready to hang from a wire.
  7. This will be a "cash and carry" show. Patrons may take paintings with them at time of purchase.
  8. The commission for this show will be Artist 70% and Gallery 30%.
  9. All artists are to complete an "Intent to Participate" form, which is on the back of this sheet.
  10. Paintings from the first 60 forms received will be hung.
  11. All paintings must be labeled on the front and back with title, medium, and price and the artist's name, telephone number and address.
  12. There is no bin work in this show.
  13. There is a \$5.00 fee to enter a painting.

*Mail entry form and \$5.00 (make checks payable to CWS) to:*

Pat Foster  
5859 S. Kenton Way  
Englewood, Colorado 80111

## **QUESTIONS?**

Call Pat Foster at 303-721-9570 or email Pat at foster\_patsteve@hotmail.com.

**CWS FIRST PLYMOUTH CONGREGATIONAL ART SHOW**  
**October 12 - November 23, 2009**

**INTENT TO PARTICIPATE FORM**

(Also Inventory and Cash Settlement Form)

(ARTIST: PLEASE MAKE A COPY OF THESE FORMS FOR YOUR RECORDS)

---

Artist Name: \_\_\_\_\_

Mailing Address: \_\_\_\_\_

Phone: \_\_\_\_\_ (Home) \_\_\_\_\_ (Work or Cell)

E-Mail Address: \_\_\_\_\_

Reminder: Painting should be framed and ready to hang from a wire (gallery-wrapped canvas paintings must have finished/painted edges and sides). Paintings on paper or canvas are accepted.

Title: \_\_\_\_\_ Price: \_\_\_\_\_ Tax: \_\_\_\_\_

Media: \_\_\_\_\_ Image Size (HxW): \_\_\_\_\_

Sold to: \_\_\_\_\_

\_\_\_\_\_

\_\_\_\_\_

.....  
**Totals (to be completed at sale)**

Price: \_\_\_\_\_ Tax: \_\_\_\_\_

Less 30% commission on Price: \_\_\_\_\_

Balance due to Artist: \_\_\_\_\_



Utah Watercolor Society

# Hosts the 35<sup>th</sup> Annual Western Federation of Watercolor Societies Exhibition MAY 14 – JUNE 28, 2010



**Juror: Carla O'Connor**

Invitational Exhibition of Contemporary International Watermedia Masters, Nanjing, China, 2007-08 and "Watercolor!" Peninsula Fine Art Center, Newport News, VA.

In addition to earning a BFA in painting from Kent State University, Carla has done additional formal study at the University of the Americas, Mexico City; University of Dayton, Ohio; and the University of Wisconsin, Milwaukee. She is a signature member of the American Watercolor Society, National Watercolor Society and Northwest Watercolor Society and is an AWS Dolphin Fellow.

Carla is the recipient of many awards including awards from the National Watercolor Society and the American Watercolor Society including the AWS Silver Medal. Her work has appeared in numerous publications including Nita Leland's "Exploring Color" and "The New Creative Artist" as well as "Splash 5 - The Glory of Color". She has authored articles for U.S. publications including The Artist Magazine, International Artist Magazine, Watercolor Magic, Watercolor, American Watercolor Magazines, and The Artist, in the United Kingdom.

O'Connor teaches workshops throughout the year in the U.S. and abroad and her teaching DVD, "Figure Design in Gouache- The Process" was released in the July of 2008. For more information about Carla's work and her DVD, visit [www.carlaconnor.com](http://www.carlaconnor.com).

Our talented juror, Carla O'Connor has juried for many national and international art exhibits including AWS and NWS, the Rocky Mountain National Exhibition, California Watercolor Society, Watercolor Art Society – Houston, and AWS International Exhibition in 2008. O'Connor participated in the First

## **WESTERN FEDERATION OF WATERCOLOR SOCIETIES**

The Western Federation of Watercolor Societies (WFWS) was formed 35 years ago through the foresight and work of Dr. David Gale (1915 - 1980) of the New Mexico Watercolor Society. Today, the WFWS includes over 4,500 artists in ten regional watercolor societies and guilds.

The WFWS encourages and recognizes artistic excellence and works to increase visibility of watercolor as an artistic medium through our annual exhibitions.

Arizona Watercolor Association (Phoenix, AZ)	AWA
Colorado Watercolor Society (Denver, CO)	CWS
Idaho Watercolor Society	IWS
Nevada Watercolor Society (Las Vegas, NV)	NWS
New Mexico Watercolor Society (Albuquerque, NM)	NMWS
San Diego Watercolor Society (San Diego, CA)	SDWS
Southern Arizona Watercolor Guild (Tucson, AZ)	SAWG
Southwestern Watercolor Society (Dallas/Ft. Worth, TX)	SWS
Utah Watercolor Society (Salt Lake City, UT)	UWS
Watercolor Society of Oregon	WSO
West Texas Watercolor Society (Lubbock, TX)	WTWS

### **Key Dates for the Artist**

Nov. 15, 2009	Entries due to your Society Delegate
Jan. 28, 2010	Accepted notices mailed to Delegate
Feb. 19, 2010	Matted paintings due to society delegate
May 14, 2010	Exhibition opens to Public Dessert Reception 6:30 – 9:00 p.m.
June 28, 2010	Exhibition Closes
July 6 – 15, 2010	Artwork returned via shipper to artists

### **AWARDS**

Best of Show	\$1000
David Gale Memorial Award	\$700
Award of Excellence (4)	\$500
Award of Merit (4)	\$300
Honorable Mention (3)	\$200



# 35<sup>th</sup> Annual WFWS Exhibition

---

## ENTRY REQUIREMENTS

1. The artist must be a member of one of the societies in the Western Federation of Watercolor Societies (WFWS) and may enter through one society only.
2. Work must be original and completed within the last two years. All work must be water media on paper or yupo presented in a primarily aqueous manner. Water media includes watercolors, acrylics, inks, gouache, casein, egg tempera, watercolor pencils and watercolor crayons. Collage materials must be painted by the artist with water media. Non water based media may be integrated into a primarily aqueous painting as a minor element (20% or less of the surface). No copies of another artist's work or recognizable use of another's copyrighted intellectual property will be accepted. Paintings must not have been shown in any WFWS, national or international exhibition.
3. Size Limitations:  
Maximum outside mat size: 32" x 40" –  
**(must be in whole inches – no fractions!)**  
**Minimum mat width: 3.5"**  
Minimum image size 8" x 10"
4. Entries will be submitted digitally, either as an email attachment or on a CD enclosed with your entry. CDs will not be returned. (See Digital Image Requirements)
5. Accepted works must be matted with a single white or off-white mat (no gray or beige). Include a 3/16<sup>th</sup> inch foamcore backing in a labeled, resealable plastic sleeve.
6. No price changes will be accepted. **PAINTINGS MUST BE FOR SALE** and available for the duration of the show. A 30% commission will go to the Utah Cultural Center.
7. Submission will be rejected if it does not conform to information provided with entry. The juror's decision is final. Permission is assumed by UWS to reproduce accepted artwork for the catalog and promotional uses. Failure to provide accepted artwork will result in the artist being ineligible to enter WFWS for the following two exhibitions.

## FEES – Make check payable to your society

One entry is \$25, \$5 additional each for up to 2 more entries. Only one painting per artist will be accepted. Entry fees are non-refundable. All entrants will receive a full color catalog. Additional catalogs may be purchased from UWS for \$15.

**IF ACCEPTED** - Accepted paintings must be shipped by the artist with a pre-paid return. A handling fee of \$40 will be required. Detailed instructions for labeling and shipping will be included with notification of acceptance.

**IMPORTANT** - Entry form, digital files (and questions) should be sent to your society's delegate, not to UWS. Your society's contact information is:

**Society:** [Colorado Watercolor Society \(CWS\)](#)

**Delegate:** Sydney Eitel,  
[1019 Lamar St, Lakewood, CO 80214](#)  
**303-237-3409**

**Email:** [sydneyeitel@yahoo.com](mailto:sydneyeitel@yahoo.com)

## DIGITAL IMAGE REQUIREMENTS

Digital image files **MUST** conform to the following requirements:

1. File format: .jpg files (no exceptions).
2. Resolution must be 300 dpi
3. Image size must be set so the longest dimension is 1200 pixels.
4. Each image file must be named as follows:  
Society initials, first four letters of last name, painting number (1, 2, 3), painting title (short versions please), .jpg extension.  
Example: Utah, Sue Martin, 1<sup>st</sup> entry, "Making Memories at Western Events" would be:  
UWSMart1MakingMemories.jpg
5. Put the image(s) on a CD or email them to your local delegate.

# 35<sup>th</sup> Annual WFWS Exhibition May 14 – June 28, 2010

Keep This Section for Your Records

	Complete Title (please print)	Price	Image Size H x W	Mat Size H x W
Entry #1				
Entry #2				
Entry #3				

**Check List** (Contact \_\_\_\_\_ with questions)

- ☐ Painting has not been in prior WFWS, National or International Exhibition  
☐ JPG digital file emailed or on CD and enclosed (CDs will not be returned)  
☐ Check enclosed, made out to your society  
☐ Entry form, signed and completed  
☐ Email address or self-addressed, stamped, envelope (#10 business) included

## Key Dates

**Nov 15, 2009** Entries due to your Society Delegate

Jan 28, 2010 Accepted notices mailed to Delegate

Feb 19, 2010 Matted paintings due to Delegate

## ENTRY FORM

### 35TH ANNUAL WESTERN FEDERATION OF WATERCOLOR SOCIETIES EXHIBITION

Neither the Utah Watercolor Society nor its officers, nor any receiving or leasing agent will be liable for loss or damage to any work of art submitted to this exhibition. Insurance, if desired for shipping, exhibition or any other reason, is the responsibility of the individual artist. Images of selected work may be used for publicity, catalog or slide shows at the discretion of the UWS. By submitting work to this exhibit the artist agrees to the conditions set forth on this entry form. I hereby agree to the above liability clause and to abide by all the rules and regulations set forth in the prospectus of the Western Federation of Watercolor Societies 35th Annual Exhibition. Permission is granted to photograph my painting and use my image for publicity purposes.

Artist signature \_\_\_\_\_ Date \_\_\_\_\_

PLEASE PRINT CLEARLY

Name \_\_\_\_\_

Address \_\_\_\_\_

City \_\_\_\_\_ State \_\_\_\_\_ Zip code \_\_\_\_\_

Phone \_\_\_\_\_ Email \_\_\_\_\_

JPG File provided as:

\_\_\_\_\_ Email attachment

\_\_\_\_\_ CD (enclosed)

Entry Fee	1 entry	_____ \$25
	2 entries	_____ \$30
	3 entries	_____ \$35

Check # \_\_\_\_\_

		Medium	Price	Image H x W	Outer Edge of Mat H x W
Entry #1	Title				
	File Name				
Entry #2	Title				
	File Name				
Entry #3	Title				
	File Name				

**Fill in this section and provide a self-addressed stamped #10 envelope if you do NOT wish to be notified by email**

Artist's name:

Entry 1 Title _____  Accepted      Not Accepted	Entry 2 Title _____  Accepted      Not Accepted	Entry 3 Title _____  Accepted      Not Accepted
----------------------------------------------------------	----------------------------------------------------------	----------------------------------------------------------



**Colorado Watercolor Society**

c/o Sydney Eitel  
1019 Lamar St  
Lakewood, CO 80214

**35th Annual  
Western Federation of Watercolor  
Societies Exhibition**

**May 14 – June 28, 2010**

**Utah Cultural Celebration Center**

1355 West 3100 South

West Valley City, UT 84119



**WFWS**

Western Federation of Watercolor Societies