

COLORADO WATERCOLOR SOCIETY

Our 51st Year of Excellence.

Collage

January, 2006



January 17, 2006 GENERAL MEETING



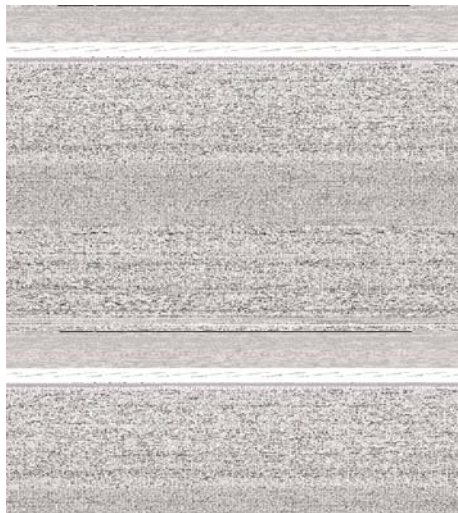
David Wicks
Cresky Krumlov, Watercolor
Best of Show, Botanic Gardens



Phyllis Vandelaar
A Blaze of Glory, Watercolor



Jan Archuleta
Magic's Meadow
Watercolor
Award of Merit Botanic Gardens Show



Kathleen Lanzoni with her painting *Up Ahead*.
Kathleen won Second Place at the Botanic
Gardens Show, and also received the People's
Choice Award.



Elizabeth Line
The Dressing Room
Watercolor
Third Place, Botanic Gardens Show

IN THIS ISSUE

IMPORTANT DATES
SUBMISSION REQUIREMENTS
Page 2

**GREETINGS from the
PRESIDENT**
Page 3

January 17 Meeting

**Corrections to the
Roster**

Page 4



EXCITEMENT IS BREWING

**CALL
FOR ENTRIES**

Page 5

2005 Botanic Show Hours

MEMBER PROFILE

Page 6

**NEWS
FROM OUR MEMBERS**

2005 Botanic Show Thanks

Page 7

CWS

Board and Committees

President

Gene Youngmann
gyoungmann@comcast.net
303-421-9886

Co-Vice Presidents (Programs)

Beatrice Trautman
BMTRAUTMAN@comcast.net
303-697-8589
Cheryl Scott
cherylascott@msn.com
303-789-2370

Immediate Past President

patricia.rucker@comcast.net
303-277-0681

President Elect

Diane Fechenbach
dfenchenbach@qwest.net
303-791-4591

Recording Secretary

Pat Fostvedt
pfostvedt@aol.com 303-973-2984

Treasurer (Interim)

Mame Cairns
mamec@comcast.net 303-986-6389

Exhibition Official

Terrey Harrod
jcharrod@yahoo.com 303-981-6004

Membership Official

Karen Proudfoot
kproudfoot@msn.com
720-344-7302

Corresponding Secretary

jchanson52@aol.com
303-759-3752

Board Member at Large 2004-2006

Retha Boles
rethaboles@netzero.net
303-697-6673

Board Member at Large 2005-2007

David Wicks
303-738-0860
artopia@comcast.net

Annual Banquet

Rosemary Laughlin
akatrends@aol.com
303-347-2422
Merrie Wicks
merrie.r.wicks@medtronic.com
303-979-5884

Computer/Mailing List

Patricia Braden
PatriciaBraden@yahoo.com
303-792-5915

Courtesy

Suzanne Bartlett
303-771-4194

Critique Group (North)

Lillian Montoya
303-428-3083

Critique group (South)

Barbara Wertheimer
303-757-1469

MISSION STATEMENT

The Colorado Watercolor Society is an organization dedicated to uphold the highest standards and principles of art and to promote, encourage and foster an interest in fine art in all media, especially watermedia.

DATES FOR CWS MEETINGS, SHOWS, EVENTS

January 17: Board Meeting

January 17: General Meeting

MEMEBERSHIP INFORMATION

Please send membership inquiries to

Karen Proudfoot

kproudfoot@msn.com

720-344-7302

TO CHANGE ADDRESS, OR IF YOU DO NOT RECEIVE

Collage

Please send changes to

Patricia Braden

PatriciaBraden@yahoo.com

303-792-5915

SUBMITTING NEWS TO NEWSLETTER

Patricia Rucker, Editor

501 Peery Pkwy

Golden CO 80403

303-277-0681

email: patricia.rucker@comcast.net

By Mail: on 8/12 x 11 paper, date, sign your name and include phone number if there are questions.

By e-mail: To Editor as an e-mail or a Word document attachment to your e-mail.

In Person: give information on 8 /12 x 11 paper, dated and signed to Editor or any Board Member at meeting. Images must be sent as a JPEG or TIFF.

to visit the CWS Website:
www.Colorado Watercolor.org

Greetings from the President

President's Message for January 2006

As we begin the new calendar year, I hope that you have been painting and are now ready to start entering shows and exhibitions. I want to direct my President's Message to some helpful hints and answer some questions about entering shows. Our January General Meeting on Tuesday, January 17th will be directed to the beginner painters in our group to help them become involved in entering shows and getting accepted to shows.

In this **Collage** you are receiving the Annual State Watermedia Show Prospectus. First and foremost, **read the entire prospectus.** Note the calendar of dates and any other important information that is different from other shows. Put your prospectus in a safe place where you will find it when the time comes to prepare your entry. Requesting an extra copy of the prospectus because you lost it is embarrassing. Organizations do not have extra funds to send out extra prospectus because you lost yours. Double check the little things mentioned in the prospectus. Do you qualify to enter the show? Does your artwork qualify to be submitted to the show? Check the media requirements, does the prospectus say that the watercolor must be supported by paper? If so, that means you have to be painting on watercolor or watermedia paper or watercolor board. Watercolor canvas is not accepted as paper support for many shows.

When the time comes to complete the entry form take extra care to do it right the first time. Allow enough time to complete and mail the entry materials before the deadline. The deadline usually means that the entry materials must be in their hands by that date. Allow up to five days if you mail your entry. If you are inside the five days before the entry deadline, call the contact person and make arrangements to hand deliver the entry to them. Don't waste your money to overnight your entry if it is an in-town address. Call the contact person first and save yourself some money. Out of town, yes, you will have to overnight the

entry.

In preparing your entry take time to do it right. Re-read the prospectus before you begin. Check your slides. Do your slides meet the requirements? Will your slides fit into a carousel slide tray? Have you projected your slides to see the quality and if they are in focus? Your slides are the only chance you have to show your work to the juror. If you have poor quality slides, meaning out of focus or showing more than just the image, chances are the juror will pass over your artwork or even rejected it from acceptance. If you plan to spend the money to enter a show make sure you have quality slides to show off your work.

Filling out the entry form and labeling your slides are very important and you need to take extra care to do it right. Use a Black Fine Point Sharpie. These are waterproof and easy to use. Do not use pencil or water base pens, this smears and rubs off. Always print all information; someone else has to read this information. Make sure that you use the same information on all forms, don't change or abbreviate information from the entry card to the notification card, keep everything the same. Spell things out. When labeling the slide make sure you are on the "front side" of the slide. Leave room in the upper right hand corner of the slide so it can be numbered when received. Wait for the ink to dry on plastic slides before you put them in the slide sleeve.

Check to see that you have completed everything before your seal the envelope. Only send the portion of the entry form that is needed and keep the rest for your records. Did you record which paintings you are entering into this show? Write down, someplace the information about the painting you are entering into which shows. This helps from overlapping entries and being disqualified from a show. Make sure that you sign the entry form and read what you are signing. Read the statement and make sure you can live up to the requirements stated.

Continued on pg

Education Committee

Nancy Nelson
flydni@aol.com
303-694-4848

Graphics Coordinator

Tanis Bula
tanisbula@qwest.net
303-794-7456

Greeter

Carolyn Tegeder
montjayhawk@aol.com
303-973-2679

Historian

Pamela Hake
woverillo@aol.com
303-646-2290

Hospitality

Kate Wyman 303-933-2767

Librarian

Ruth Nystrom
303-986-0101

Finance Committee

Mame Cairns

Parliamentarian

David Wicks

Public Relations

Patricia Rucker

Recognition Certificates

Jeri Desrochers
jdesrochers@earthlink.net
303-674-5042

Resumes

Elaine Appel
appbud@aol.com
303-322-5414

Roster

Patricia Braden
Diane Calkins
cdgraph@aol.com
303-561-4997

Slide Review

Pat Dall
paddall@yahoo.com
303-798-5805

Signature Membership

Barbara McAdams
719-591-9182
mdmcdams@earthlink.net

Sitter/Staffer

Carolyn Tegeder

Storage Unit

Andrew Dubois
dubois1924@aol.com
303-237-4384

Telephone

Susan and Terry Kacic

State Show

(Position needs to be filled)
Elystica Schaezel

Botanic Show

(Position needs to be filled)

Members Show

(Position needs to be filled)

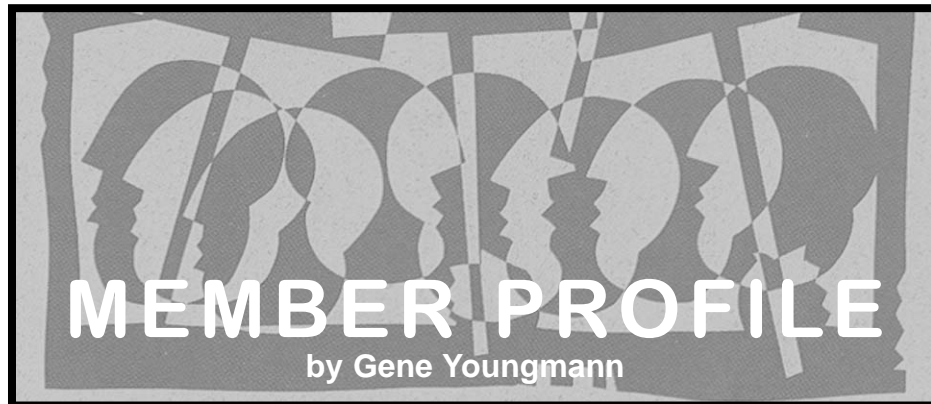
January 17 General Meeting

Start the new year with a renewed commitment to paint more and enter your work in shows! Whether you are a seasoned watercolorist, or a beginner, it is always helpful to review the ins and outs of entering shows. At our general meeting on Tuesday, January 17th, we will host a panel of experienced artists who will answer your questions and give us valuable information about slides, matting, filling out entry forms, what judges look for, etc. to prepare us for upcoming shows.

Gene Youngmann, Pat Rucker, Diane Fechenbach and Rita Derjue will be sharing information that we all need to learn or review to get started. So bring your questions, and bring a beginner to our next meeting. January is a great month to start with more information and resolve to immerse ourselves in our art.

Remember to sign up for the Catherine Anderson workshop coming in February. It is almost full now but we will take names on a waiting list.

Please see Beatrice Trautman at the meeting for more information.



Ken Vance



Ken Vance joined CWS in 2001 and in the summer of 2002, as crazy as it may seem, he quit his "real job" as an Electrical Designer to become a full time artist.

Ken's unique style can be attributed to being self-taught. He has taken a few workshops that have given him tools to improve his style, but not change it. As he reviews his work, he is drawn to the work of past and present artists of Albrecht Durer, Vincent Van Gogh and Wolf Kahn.

Since being an artist is now Ken's career, selling art is a more important part of making it. He has learned that quality Art Festivals have a competitive jury process and in some cases a costly booth fee, balancing costs, location, and potential to sell has been a learning process. This past year, Ken has finally started getting into the 'real' art shows and transitioning out of the "craft" shows. Here is where he spent his past summer showing his artwork: Spring Art Festival, Taos, NM; Art Market, Estes Park, CO; Conifer Arts Festival, Conifer, CO; Strawberry Days, Glenwood Springs, CO; Art on the Mountain, Steamboat Springs, CO; Summerfest, Evergreen, CO; Avon Fine Art & Wine Affaire, Avon, CO; Snowmass Arts Fest, Snowmass, CO; Vail Arts Festival, Vail, CO.

Ken feels really fortunate that he actually has collectors, individuals that have purchased more than three pieces and in some cases up to six pieces. He even has work in a home in Okinawa, Japan.

Ken is also a member of the Shadow Mountain Gallery Co-op in Evergreen, CO. He joined their board in 2004 and was appointed president for 2005. He found that sales in a Gallery setting like Shadow Mountain Gallery Co-op are not as profitable as the summer festivals therefore he will be leaving the co-op at the end of the year.

Ken's artwork is also displayed at the Manitou Springs Gallery, Mountain Living Studio. The owner discovered his work on the artists register website of which he's been a member of since 2003. Ken is also a member of the Colorado Artists Guild and the Evergreen Artists Association and was on the board of the EAA in 2004.

Ken enjoys entering his work in local juried exhibitions. He doesn't want to jinx himself, but he feels he is kind of on a role with CWS shows - he has been accepted into the last two shows, leaving him only one more acceptance before he can apply for signature membership. He is keeping his fingers crossed!



Ken Vance
"After the Rain"



DONATIONS

Remember Upstairs, Downstairs, Keeping Up Appearances, Are You Being Served? and many more great English Shows that keep us laughing? Please keep these shows and other educational shows going in the New Year by donating a painting to the Channel 6 Auction in April of 2006. I will keep you posted as to the dates and time to bring your paintings to our meetings in 2006. I will deliver them to the auction. We need at least 8 paintings per table so let's shoot for several tables. Many thanks, John Murphy, Channel Auction Donations Chairperson.

Tom Lynch Watercolor Workshop April 24-28, 2006 Westminster, Colorado

Internationally recognized artist, Tom Lynch, is coming to Colorado, April 24 - 28, 2006, to teach a 5-day watercolor workshop. This workshop is being sponsored by the North Metro Arts Alliance and is limited to 26 students on a first come, first serve basis. The fee for the 5-day workshop is \$375. Reserve a space with a \$100 deposit. Balance is due by March 15, 2006.

Tom's objective is to show the vast range and flexibility of watercolor. Learn to put emotion and convictions into painting by pushing the limits of color, contrast and light. Tom likes to put fun into the process of painting. Tom has an organized program that sets a goal for each day and sees that each student has an example and understanding of that day's lesson. See daily demonstrations with detailed explanation of all the how's and why's, followed by individual attention, and a positive critique session.

Past students have said that they learned more in one day of Tom's workshop than they have in years. Tom Lynch's credentials include five award winning PBS television series, Artist for



Lou Ann Sousalla
Shimmering Pool
Award of Merit Botanic Show

the PGA, and the author of numerous art books. Please call 303-466-2512 to receive registration materials. Contact; Becky Silver, 303-466-2512, beckyesilver@aol.com.

Betty Grace Gibson has recently been published in "Collage In All Dimensions". The book sponsored by the National Collage Society, Inc., honored the "Best of Show" winners. Betty Grace won in 1997 with a collage titled "Canyon Walls". The painting consisted of watercolor, gesso, charcoal and polishes agate. She also has a collage and mixed-media painting titled "the Lady and Her Birds" in the newly published "The Art of Layering: Making Connections", published by The Society of Layerists in Multi-Media.

Betty Grace Gibson will teach a two day workshop (April 14-15, 2006) on acrylic, watercolor and mixed media collage at Foothills Art Center in Golden, CO.

By Janice Hanson
Corresponding Secretary
The CWS Board met on November 15, 2005 to discuss the following items.

The Member Survey returns have come in at a rate (20%) far greater than the average (5%) and more will be collected at the General Meeting. The full results will be posted on the website. It will be most enlightening to learn who we really are and what member concerns and hopes are for CWS.

Two vacancies remain for key positions: Treasurer, a position graciously being filled by Mame Cairns on an interim basis, and Photo Pool Coordinator (this person ensures that someone, from an existing list of volunteer photographers, is present at various CWS events).

The photographs are used both for the newsletter and for the historical records of CWS.

Nan Lund reported on CWS Website development. The website continues to offer more and more potential exposure for members to the public via possible links to and reciprocal links from other websites, as well as a vehicle to attract new members to our organization.

The policy regarding the required sitting of shows if accepted was also under discussion. "No shows" by sitters are becoming a problem even though part of exhibiting in a show is agreeing to sit the show. Penalties for such absences may be enforced. New policies, when decided, will appear both in the Collage and on future prospectuses.

Also cause for concern is the quantity of food being consumed at show receptions. People are taking advantage of our generosity in providing free and high-quality food. What is being served and how is under discussion for future events.

The Jury Selection Committee, headed by Sue Williams, will be working on new procedures concerning juror qualifications, contracts and guidelines for selecting a juror.

There are still spaces available in the Catherine Anderson workshop scheduled for the third week in February. Contact Beatrice Trautman for details: 303-697-8589.

Thanks to those who have stepped up to fill vacancies: 2006 State Show Chairs: Patricia Greene and Monica Stephens, Awards Chair: Elycia Schaezel, Prospectus: Martha Monnett, and Reception: Dee Buchanan, 2006 Botanic Gardens Chairs: Carol Tegeder and Elizabeth Line, and Members Show Chairs: Donna Lutsky and Pat Foster.

An informative meeting on the ins and outs of entering juried shows is planned for January.



Colorado Watercolor Society

P.O. Box 100003 • Denver, CO 80250-0003

PRESORTED STANDARD
U.S. POSTAGE
PAID
DENVER, CO
PERMIT NO. 5226

January 17, 2006 - General Meeting